



CATEGORY — NEW CONSTRUCTION COST GREATER THAN \$5M
PROJECT TYPE — 95,000 SF COMMUNITY HEALTH CENTER
PROJECT ADDRESS — 6002 E 38TH STREET, INDIANAPOLIS
COMPLETION — MARCH 2024
LEED CERTIFICATION LEVEL — SILVER - SEPTEMBER 2025

DESIGN STATEMENT

Eskenazi Health Thomas & Arlene Grande Campus: Revitalizing a Community Through Holistic Care and a Healthy Environment

The Eskenazi Health Thomas & Arlene Grande Campus is a new LEED Silver Certified, comprehensive healthcare facility located on East 38th Street in the Northeast Corridor of Indianapolis, Indiana. This underserved community has long struggled with high unemployment, low life expectancy, and limited access to quality healthcare. The project aims to revitalize the area by offering a one-stop shop for medical, mental health, and social services along with acting as a community hub for neighborhood activities and engagement.

From the start, the community was deeply integrated into the design process. Their invaluable input shaped every facet of the facility, from color palettes and artwork to material selection. This collaborative approach ensured the design not only met, but truly resonated with, the unique character and needs of the community it serves.

The facility and landscaping are tied together with a ribbon that is visible in both the building's exterior envelope, interior stair, and landscaping. This ribbon celebrates the coming together of Eskenazi Health, the Marion County Public Health Department, and the community to create a facility that brings a new standard to community-based healthcare design. The interior design elements are focused on natural, soothing colors, rich materials and textures, and art to embrace all cultures and make all feel welcome.

Guiding Design Principles

CONNECTION

Connecting the exterior with the interior, color with light, space with movement, and geometry with organic form, this design integrates Eskenazi's history and traditions with a facility that embodies and promotes growth. It seamlessly melds the storied past of both the neighborhood and Eskenazi with a future-oriented vision, achieving a harmonious balance that empowers and embraces progress.

NURTURING

Our approach is designed to respond to the needs, values, vision, and desires of our occupants and end-users, with the fundamental goal of enhancing their quality of life.

SUPPORT

Both emotional and physical support is provided for a diverse range of patients and employees, extending beyond the typical patient care. This was designed as not just a health facility—it is a community center focused on health.

BELONGING

Our design considers the surrounding context, environment, and neighborhoods, ensuring that it resonates with a distinct sense of place. Architecture serves as a powerful tool that can create a better world, strengthen communities, and act as a catalyst for change.

RENEWAL

This project focuses on healing and restoration, aiming to create a new and improved experience. We're shifting the mindset from seeing individuals as patients in a clinic to recognizing them as people in a center dedicated to their well-being.

TIMELESS

Our vision extends beyond merely fulfilling a program; it encompasses a higher mission. This project is defined not just by its structure, but by the problems it solves and the positive impacts it creates.

UNITY

This space is designed to be accessible and welcoming to everyone—physicians, patients, nurses, and volunteers alike—ensuring a positive experience for all.



DESIGN STATEMENT



Problem

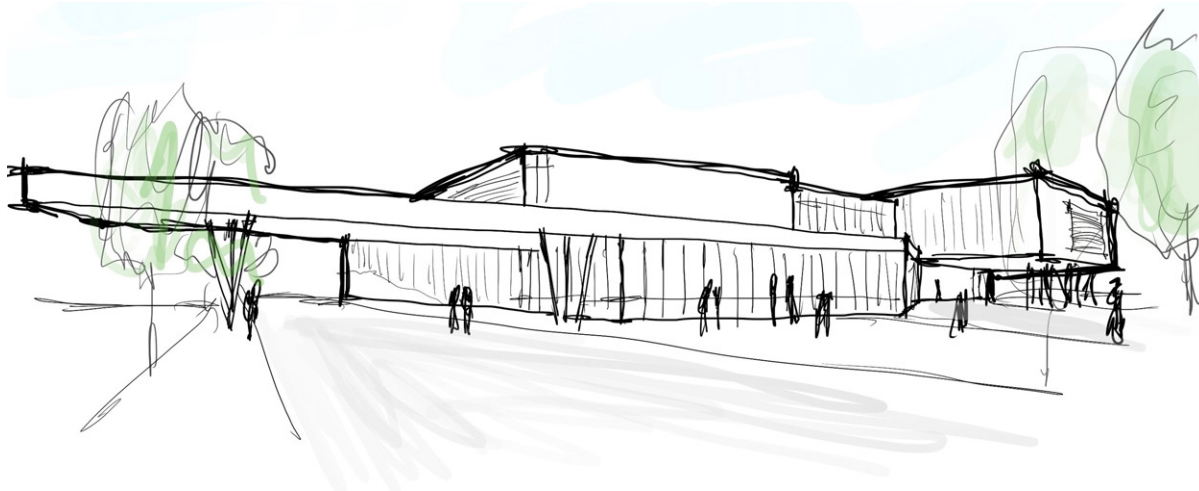
The 38th Street area has long struggled with high unemployment and low life expectancy. Abandoned buildings, hazardous roads, and other signs of disinvestment reflect decades of neglect in this community. The unemployment rate in this area is five times higher than the county average, contributing to a prevalence of gun violence. Over 40% of residents report having no leisure time, caused by limited access to parks and green space. Nearly half of residents are housing cost-burdened, spending more than 30% of their income on rent or mortgage.

The neighborhood's appearance reflects its challenges, with numerous abandoned buildings and poorly maintained businesses, including many liquor stores and trash accumulating on streets and sidewalks. Residents of this poorly maintained environment experience higher crime rates and distrust in law enforcement, with many families impacted by trauma. This lack of economic stability is due to limited job opportunities and other resources.

Solution

The new Eskenazi Health Thomas & Arlene Grande Campus significantly expands access to comprehensive health services for the community. The facility offers a wide range of care, including primary care for all ages, mental health services, OB/GYN, physical therapy, imaging, a pharmacy, and lifestyle medicine. It features 73 exam rooms, 28 consultation rooms for mental health services, as well as support from dietitians, social workers, and a medical-legal partnership. Additionally, the campus provides a tech hub, teaching kitchen, and multipurpose room for community use. Visitors can also access a cafe and nearby grocery store, making it convenient to address their health and daily needs in one location. By offering this robust set of integrated services, the new Grande Campus aims to promote healthier and more vibrant communities.

The architectural design of the Eskenazi Health Thomas & Arlene Grande Campus is guided by the principles of "Reaching Out" and "Welcoming In." The building's form and materials are intentionally designed to be inviting and accessible to the community, while also providing a sense of security and stability.



The fully renovated 12 acre campus features three distinct entrances - a drop-off entry, a corner street entry, and a community garden plaza entry - ensuring easy access for patients, visitors, and staff. Despite its substantial 95,000 square foot size, the building is thoughtfully designed to promote wayfinding and navigation. The Monumental Stair greets the patients and offers multiple paths to the Second Floor. Elements such as clear and concise maps, easy-to-read signs, and a logical layout helps people find their way around the building. Additionally, thoughtfully designed signage featuring large overhead directional signs and glass entrances marked with vinyl large-scale graphic numbers and letters can further aid navigation. The facility includes a staffed information desk and a conveniently located kiosk near the front door that provides multilingual wayfinding assistance.

Guided by community input, the facility will serve as a hub for community gathering, providing expanded and accessible care options and social amenities under one roof.

LEED Silver Certification (one of four LEED certified healthcare facilities in Indiana)

The new campus transforms a formerly paved site into a vibrant green space, featuring an urban garden and walking trail that create an inviting destination for community events and recreation. Health and wellness are woven throughout the design. A fitness trail runs along Pogue's Run Creek, connecting neighbors to nature, while an urban farm supplies fresh produce to the on-site cafe, teaching kitchen, and community pantry. Yoga and exercise classes extend from the multipurpose community room onto an exterior plaza, and a rooftop patio and garden provide both a daily retreat for staff and a flexible space for community gatherings.

The Eskenazi Health Thomas & Arlene Grande Campus achieved LEED® (Leadership in Energy and Environmental Design) Silver certification through its use of sustainable materials, green spaces, and a vegetated roof. Efficient building systems and abundant natural light contribute to a welcoming, healing interior environment. While ample parking is available, bike racks and proximity to the IndyGo Purple Line encourage alternative transportation.

This LEED® Silver recognition from the U.S. Green Building Council adds to Eskenazi Health's growing portfolio of environmentally responsible facilities. The facility joins Eskenazi Health Center West 38th Street and Eskenazi Health's downtown campus, which achieved LEED®Gold Certification in 2015. The downtown campus was among the first and largest new hospital campuses in the United States and first in the state to achieve that designation. Certification also reflects achievements in water efficiency, indoor air quality, and responsible resource use. Reuse of the existing urban site further contributed to the project's overall sustainability.

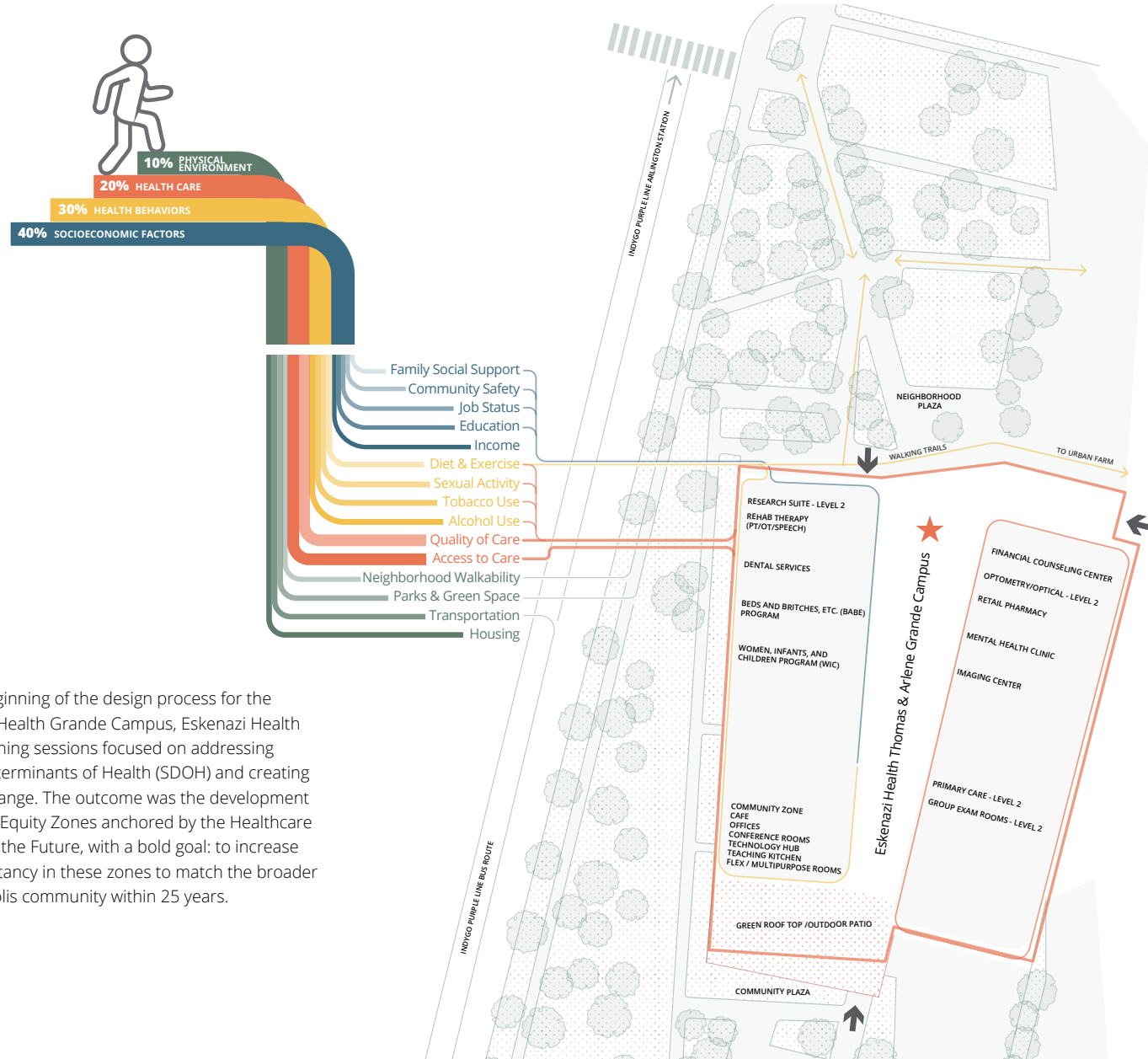
Design For Equitable Communities

To mirror the diverse make-up of the community, the Eskenazi Health Thomas & Arlene Grande Campus project established supplier diversity goals of a minimum of 15% minority business enterprise (MBE) participation, 8% women business enterprise (WBE) participation, 3% veteran business enterprise (VBE) participation, and 1% disability-owned enterprise (DOBE) participation over the course of the project effort. These goals have been exceeded, with a total diversity spend of 60%.

Overall, the Eskenazi Health Thomas & Arlene Grande Campus embodies an influential design focused on community engagement, accessibility and a sense of comfort and security for all who visit.

NEIGHBORHOOD STATISTICS AND ENGAGEMENT

Socioeconomic Condition Directly Correlates To Health



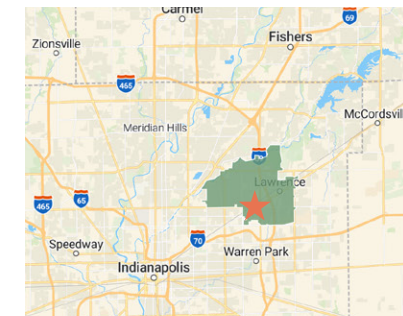
At the beginning of the design process for the Eskenazi Health Grande Campus, Eskenazi Health held visioning sessions focused on addressing Social Determinants of Health (SDOH) and creating lasting change. The outcome was the development of Health Equity Zones anchored by the Healthcare Center of the Future, with a bold goal: to increase life expectancy in these zones to match the broader Indianapolis community within 25 years.

ESKENAZI HEALTH GRANDE CAMPUS PATIENT DEMOGRAPHICS

19.4% 
Of The Population Lives Below The Federal Poverty Line

89TH 
In Health Factors

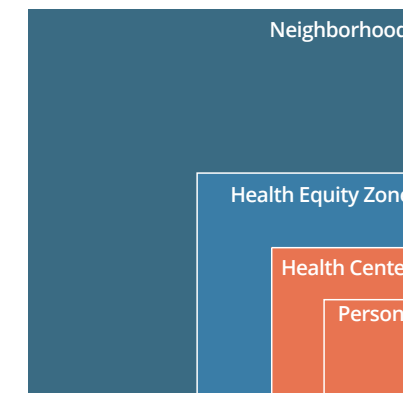
78TH 
In Health Outcomes



46226
Zip Code - Indianapolis Near Eastside

Currently, the life expectancy in the zone surrounding the Eskenazi Health Grande Campus is 16 years shorter than in nearby suburban areas, highlighting the urgent need for equitable healthcare solutions.

 **Eskenazi Health Grande Campus**



FRAMEWORK FOR DESIGN EXCELLENCE — ESKENAZI HEALTH GRANDE CAMPUS



INTEGRATION

Integrated Care Hub: Beyond a traditional clinic, the campus serves as a one-stop destination for medical, mental health, and social services, aiming to revitalize an underserved neighborhood.

Sensory & Restorative Design: The facility uses natural light, cultural artwork, and a unifying architectural “ribbon” to create a calming, inclusive environment that connects health with nature.

Nutrition & Food Access: An on-site urban farm powers a teaching kitchen and pantry, providing fresh produce and hands-on nutritional education to the community. Café Soleil offers a wide variety of healthy eating options.

Community Co-Creation: The project was designed alongside local residents, ensuring that the materials, colors, and art reflect the neighborhood’s unique identity and foster deep ownership.

Holistic Social Impact: The campus addresses the “triple bottom line” by creating local jobs, partnering with diverse businesses, and offering legal aid to combat economic and social instability.



EQUITABLE COMMUNITIES

Bold Life Expectancy Goal: The campus aims to close a 16-year life expectancy gap between the local 46226 zip code area, and nearby suburbs within 25 years.

Addressing SDOH: The strategy shifts focus beyond clinical care to Social Determinants of Health (SDOH), including food security, transportation, and mental health.

Community-Centered Design: Developed through extensive local engagement, the facility serves as a “Third Place” for social connection, community pride, and entrepreneurship.

Integrated Wellness Features: The site includes non-traditional healthcare amenities such as an urban farm, teaching kitchen, walking paths, and a technology hub.

Flexible Access Models: The design prioritizes “meeting people where they are” via wraparound services, for healthcare, nutrition, and expanded community partnerships.



ECOSYSTEMS

Ecological Transformation: The project converted a 12-acre abandoned asphalt lot into a permeable green hub, restoring regional habitats with native flora and fauna.

Sustainable Landscaping: Over 80% of the site features native, adaptive species that require little to no irrigation after establishment, significantly reducing water and chemical use.

On-Site Stormwater Management: Through green roofs, pervious paving, and bioretention islands, the campus manages all stormwater on-site to prevent urban flooding and protect Pogue’s Run.

Pandemic Preparedness: The facility includes a specialized isolation clinic pod with a separate entrance and negative-pressure mechanical systems to safely manage airborne pathogens during health crises.

Community Wellness & Connection: The site fosters health through an urban farm that supplies local food, a fitness trail along the creek, and accessible gardens that bridge the gap between patients and nature.



WATER

Drought-Tolerant Landscaping: 80% of planted areas require little to no irrigation once established, significantly cutting outdoor water demand.

Stormwater Management: Utilizes pervious paving, bioretention islands, and a Pogue’s Run buffer to manage runoff onsite effectively.

Indoor Efficiency: Water-conserving fixtures and plumbing design reduce indoor water consumption by over 25% against the baseline.

Green Infrastructure: A second-level green roof off the staff lounge supports site-wide water-saving and sustainability goals.

LEED Alignment: All indoor and outdoor strategies are integrated to meet or exceed LEED water conservation requirements.



ECONOMY

Immediate Job Creation & Diversity: The project boosted the local economy during construction and exceeded diversity goals, with 60.3% of the design team composed of minority, women, veteran, and disabled-owned enterprises.

Workforce Development: A specialized local work program provided residents with professional training and employment in construction trades, permanently enhancing the region’s skilled labor pool.

Operational Efficiency: Consolidating two smaller facilities eliminated redundancies and reduced overhead, optimizing resources to provide more cost-effective healthcare for the community.

Entrepreneurial Hub: Beyond clinical care, the campus fosters local business growth by providing a tech hub, business offices, and meeting spaces specifically for community organizations and start-ups.

Sustainable & Flexible Design: Strategic material choices, such as using stained concrete in high-traffic areas, ensured the project stayed on budget while creating a durable, flexible space designed to serve the community for decades.



ENERGY

Significant Energy Savings: The facility achieved a 13.5% improvement in energy efficiency over the standard baseline through rigorous performance prioritization.

High-Performance Building Envelope: The design utilizes low-E coatings and thermally broken, high-performance glazing to maximize insulation and reduce heat gain.

Strategic Daylighting: Rather than a traditional large atrium, the layout uses two smaller light wells and specific building orientation to pull natural light deep into the core while minimizing cooling loads.

Optimized HVAC Infrastructure: Air handling units and energy recovery wheels are enclosed on the second floor to protect equipment from the elements, reducing heat loss and extending system lifespan.

Sustainable Healthcare Model: Beyond the initial certification, the campus utilizes continuous monitoring to ensure long-term operational excellence and environmental responsibility.



WELL-BEING

Nature-Centric Wellness: Replaced asphalt with green space and a fitness trail along Pogue’s Run Creek, providing essential park access to a historically underserved community.

Holistic Health Ecosystem: Combines clinical care and mental health services with an on-site urban farm that supplies fresh produce to a community pantry and teaching kitchen.

Healing Environments: Prioritizes occupant well-being through LEED Silver-certified materials, abundant natural light, and a centralized layout designed for simple navigation.

Community-Led Identity: Developed through deep local input, the campus features 92 original artworks by Indianapolis artists and achieved a 60% diversity spend on design enterprises.

Integrated Support Hub: Functions as a “one-stop” resilient center by co-locating medical services with social supports like financial counseling, legal partnerships, and W.I.C. programs.



RESOURCES

Symbolic Unified Design: A central “ribbon” motif weaves through the architecture and landscape, symbolizing the collaborative partnership between health departments and the local community.

LEED Silver Sustainability: The facility achieved LEED Silver certification through sustainable materials, energy efficient MEP, daylighting, low-maintenance green spaces, restorative landscapes, and diverting over 63% of construction waste from landfills.

Resource-Conscious Materiality: The project prioritized environmental stewardship by using 60.5% sustainable products and repurposing existing site asphalt as foundational underlayment.

Social Equity & Inclusion: In partnership with local nonprofit Purposeful Design, custom furnishings were crafted by individuals overcoming barriers, integrating social renewal into the building’s fabric.

Inclusive Community Impact: Fostered local representation through 92 original artworks by Indianapolis artists and achieved economic equity with a 60% diversity spend on underrepresented design enterprises.



CHANGE

Legacy-Driven Mission: Established on a 170-year history of serving Indianapolis’s most vulnerable populations, the campus is designed to address modern health disparities, specifically aiming to close a 16-year life expectancy gap.

Enduring Adaptability: The facility uses a “flexible clinic pod model” with six identical, interconnected pods that allow medical services to expand or contract without the need for structural renovations.

Mobile & Universal Design: To ensure long-term relevance, the campus features mobile specialty equipment, modular furniture, and universally accessible exam rooms equipped for bariatric care.

Infectious Disease Resilience: The design includes a dedicated pod that can be isolated with direct exterior exhaustion and a separate entrance, allowing for safe treatment during outbreaks without disrupting the rest of the facility.

Community Integration: Beyond clinical care, the campus prioritizes social services and local partnerships—exemplified by using furniture from Purposeful Design, a local nonprofit that employs individuals overcoming addiction and homelessness.



DISCOVERY

Data-Driven Design: The project utilized site visits and health equity zone analysis to ensure the facility directly addresses specific community demographics and long-term health disparities.

Inclusive Engagement: Design teams collaborated closely with local stakeholders on aesthetics and functionality, building community trust and ensuring the campus reflects the neighborhood’s identity.

Workforce Development: The construction phase served as a “living classroom,” providing educational tours for students and professional development opportunities for design and construction firms.

Commitment to Growth: A formal “Lessons Learned” process was established, using feedback from the Grande Campus to refine design details for future primary care clinic renovations.

Applying Lessons Learned: The project’s success in holistic planning and neighborhood engagement has been featured at major industry events, including the 2024 AIA Indiana Healthcare Symposium and the Healthcare Design Conference.

SITE & BUILDING DESIGN

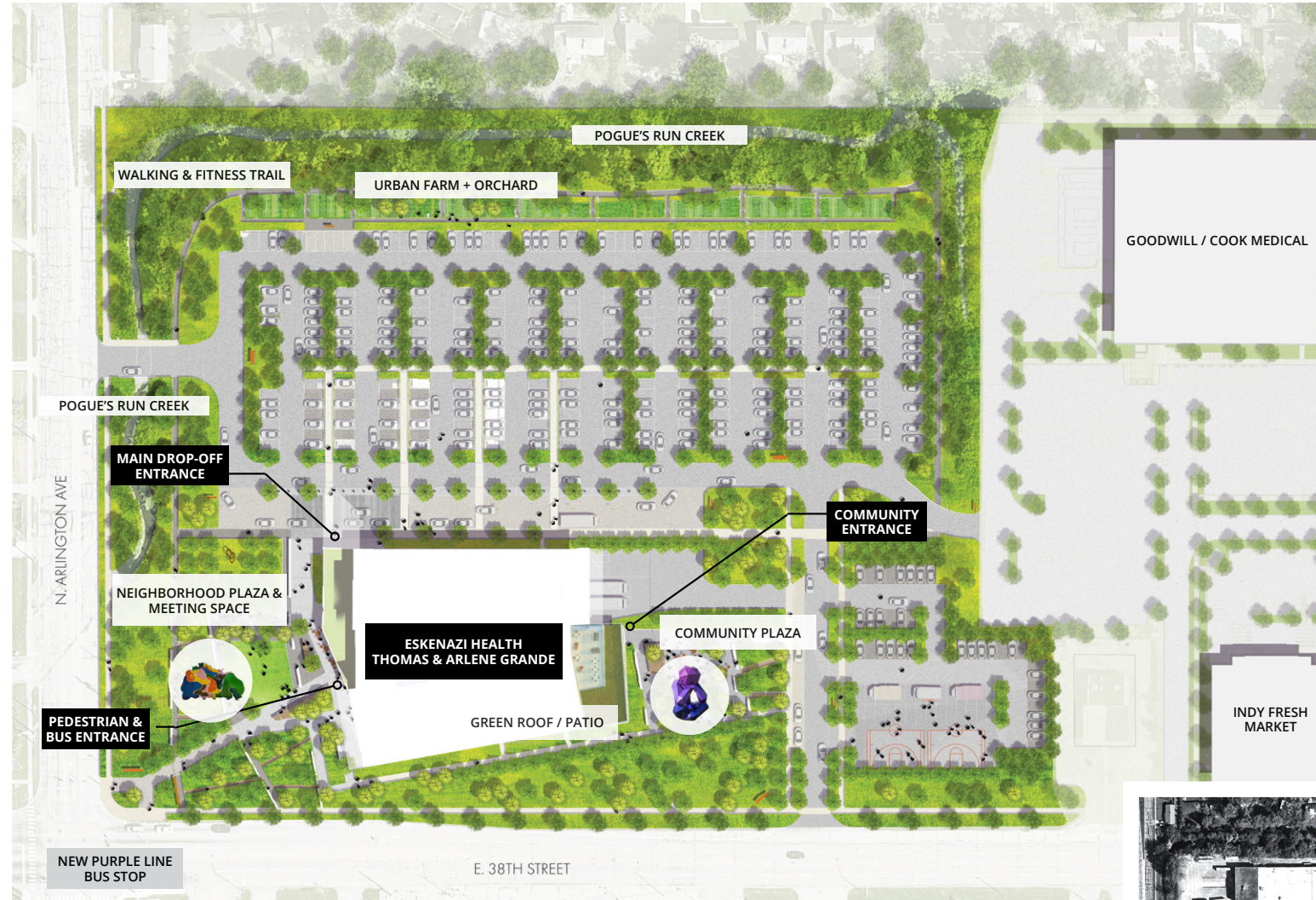
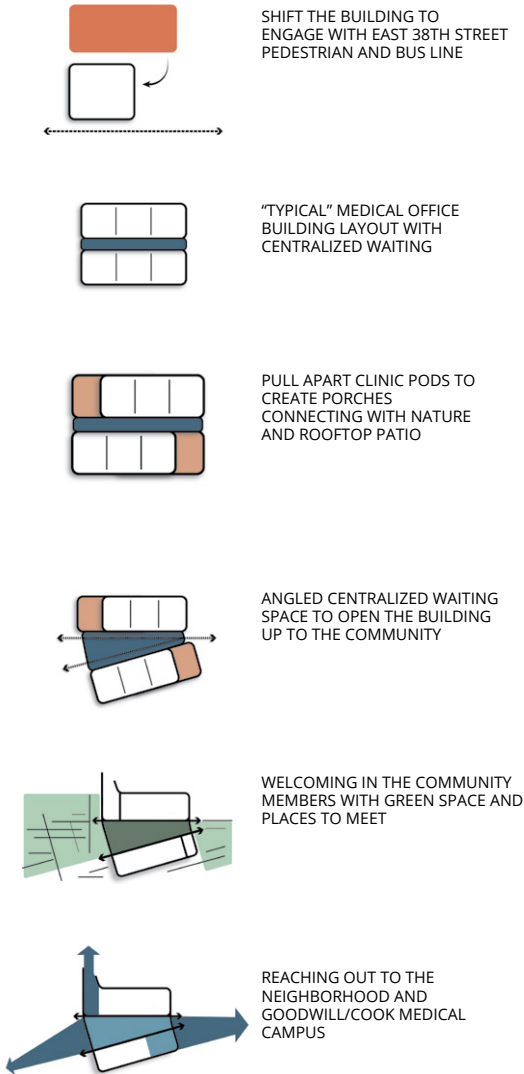
Informing Each Other

RESOURCES Resource-Conscious Materiality: The project prioritized environmental stewardship by using 60.5% sustainable products and repurposing existing site asphalt as foundational underlayment.

WELL-BEING Nature-Centric Wellness: Replaced asphalt with green space and a fitness trail along Pogue's Run Creek, providing essential park access to a historically underserved community.

WATER Stormwater Management: Utilizes pervious paving, bioretention islands, and a Pogue's Run buffer to manage runoff onsite effectively.

ECOSYSTEMS Ecological Transformation: The project converted a 12-acre abandoned asphalt lot into a permeable green hub, restoring regional habitats with native flora and fauna.



Eskenazi has a long history of caring for the city's most vulnerable populations through many factors contributing to good health including not only medicine but also investments in the quality of the built environment. The 12-acre landscape includes community plaza areas, a campus loop trail, healing gardens, native meadows and stormwater mitigation connected to Pogue's Run, a farm and orchard, and two sculptures commissioned from local artists..

EXISTING SITE 12 ACRES



AERIAL VIEW

Green Roof and Community Plaza

RESOURCES Symbolic Unified Design: A central “ribbon” motif weaves through the architecture and landscape, symbolizing the collaborative partnership between health departments and the local community.

WATER Green Infrastructure: A second-level green roof off the staff lounge supports site-wide water-saving and sustainability goals.

ENERGY High-Performance Building Envelope: The design utilizes low-E coatings and thermally broken, high-performance glazing to maximize insulation and reduce heat gain.

ECOSYSTEM Exterior: Over 80% of the planted areas, utilizing native and adaptive species, require no irrigation after establishment, demanding less water and fewer chemical inputs.



“At Eskenazi Health we promote health in all its dimensions. Our priority remains the overall health of our community in the broadest possible terms,” said Lisa Harris, M.D., CEO of Eskenazi Health. “We view this environmentally friendly health care campus as a statement of our commitment to those we serve now as well as for generations to come.”



LEED CERTIFICATION LEVEL — SILVER
RATING SYSTEM — LEED BD+C: NEW CONSTRUCTION V4 - LEED V4
CERTIFIED ON — SEPTEMBER 17, 2025

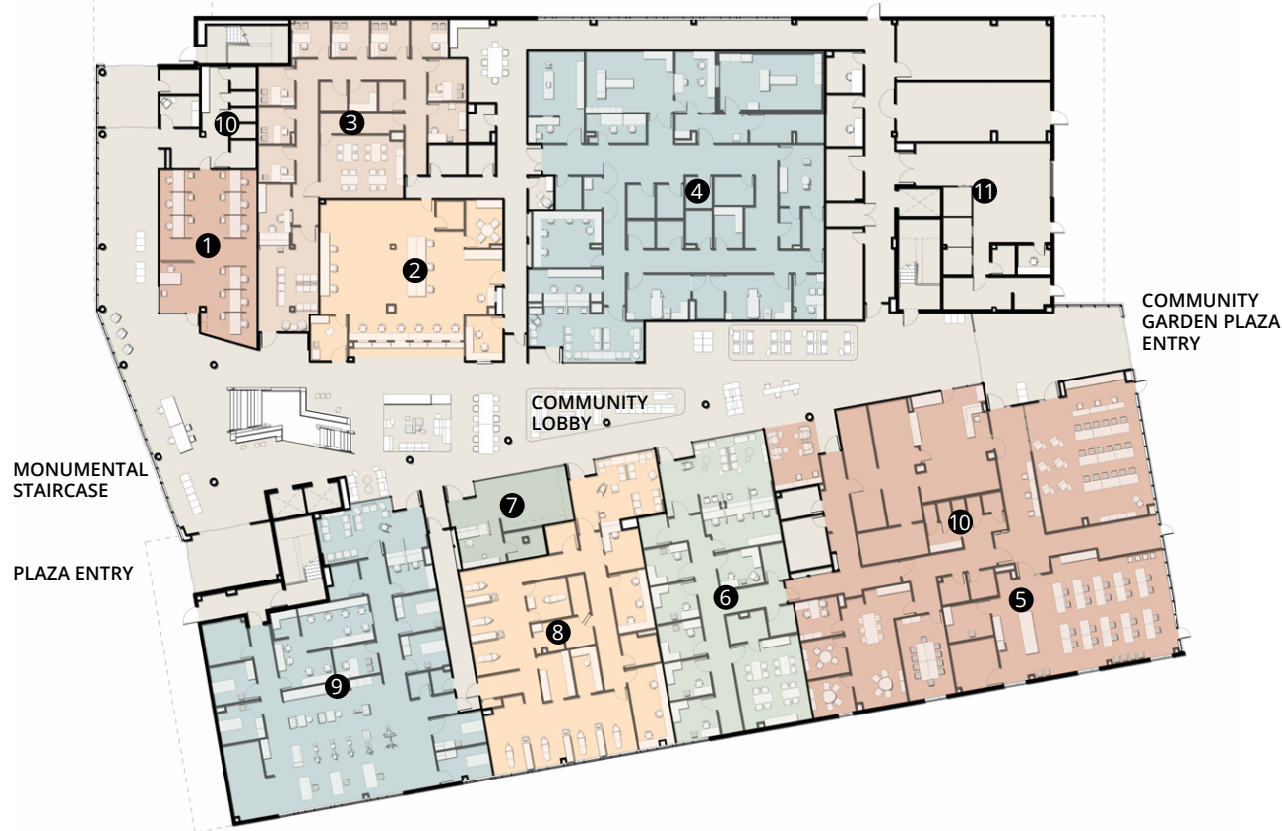


FLOOR PLANS

FIRST FLOOR Specialty Services

- | | | |
|-------------------------------|--|--|
| 1 FINANCIAL COUNSELING CENTER | 5 COMMUNITY ZONE
TEACHING KITCHEN
FLEX / MULTIPURPOSE ROOM
CAFE
OFFICES
CONFERENCE ROOM
TECHNOLOGY HUB | 6 WOMEN, INFANTS AND CHILDREN (W.I.C.) PROGRAM |
| 2 RETAIL PHARMACY | | 7 BEDS AND BRITCHES, ETC. (B.A.B.E.) PROGRAM |
| 3 MENTAL HEALTH CLINIC | | 8 DENTAL SERVICES |
| 4 IMAGING CENTER | | 9 REHAB THERAPY (PT/OT/SPEECH) |
| | | 10 GENDER NEUTRAL RESTROOMS |
| | | 11 MEP / DOCK / BUILDING SUPPORT |

DROP-OFF ENTRY



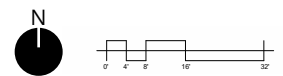
LEVEL 1 PLAN

SECOND FLOOR Primary Care Services — Federally Qualified Health Center (FQHC)

- | | |
|----------------------------------|--------------------------|
| 1 OPTOMETRY / OPTICAL SHOP | 5 EXTERIOR PATIO |
| 2 PRIMARY CARE | 6 GROUP EXAM ROOMS |
| 3 RESEARCH SUITE | 7 SHARED STAFF LOUNGE |
| 4 CENTRAL REGISTRATION & WAITING | 8 MEP / BUILDING SUPPORT |



LEVEL 2 PLAN

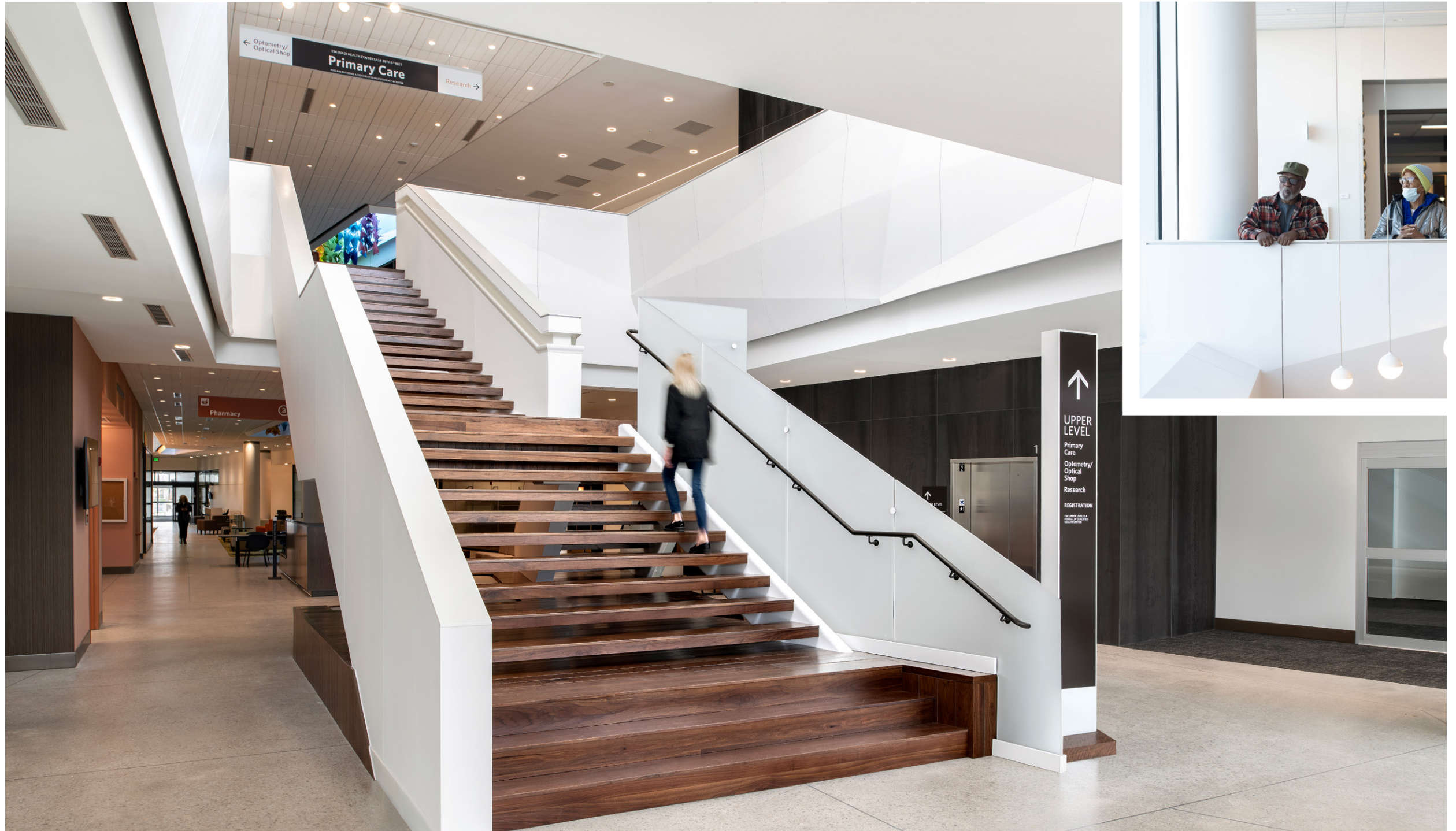


MONUMENTAL STAIRCASE TO PRIMARY CARE SERVICES

EQUITABLE COMMUNITIES Bold Life Expectancy Goal: The campus aims to close a 16-year life expectancy gap between the local 46226 zip code area, and nearby suburbs within 25 years.

WELL-BEING Comprehensive Services: The campus serves as a holistic wellness hub by integrating an extensive range of services far beyond basic medicine including Primary Care, Specialty Care (OB/GYN, Podiatry), Dental and Vision Health, Rehabilitation, and a full Imaging and Diagnostics suite.

WELL-BEING Social Support: Critical services like Dietician Consultations, Financial Counseling, Social Work, and a Medical-Legal Partnership are all on-site. Community programs like W.I.C. and BABE Store are available within.



SPECIALTY DEPARTMENTS AND COMMUNITY WAITING AREA

EQUITABLE COMMUNITIES Community Engagement:
The campus design is shaped by expressed themes and values.
• *We Meet People Where They Are*
• *Create a Corner for People to Talk*
• *A Connected Community for Healthy Living and Community Pride*

WELL-BEING Community-Led Identity: Developed through deep local input, the campus features 92 original artworks by Indianapolis artists and achieved a 60% diversity spend on design enterprises.

DISCOVERY Inclusive Engagement: Design teams collaborated closely with local stakeholders on aesthetics and functionality, building community trust and ensuring the campus reflects the neighborhood's identity.



'FRONT PORCH' ENTRANCES

CHANGE Universally Accessible: Exam rooms are universally accessible, featuring oversized doors for wheelchair and bariatric patients. Equipment for specialty care is mobile while central workrooms use modular furniture that can be reconfigured as care models evolve.

ECONOMY Sustainable & Flexible Design: Strategic material choices, such as using stained concrete in high-traffic areas, ensured the project stayed on budget while creating a durable, flexible space designed to serve the community for decades.

RESOURCES Resource-Conscious Materiality: The project prioritized environmental stewardship by using 60.5% of products with sustainable attributes verified through Environmental Product Declarations. 31% of materials were sourced through transparent, responsible supply chains.



CLINIC WAITING AREA

RESOURCES Inclusive Environment: Natural colors, rich textures, and regionally inspired materials create a soothing, inclusive environment where all feel welcome.

WELL-BEING Healing Environments: Prioritizes occupant well-being through LEED Silver-certified materials, abundant natural light, and a centralized layout designed for simple navigation.

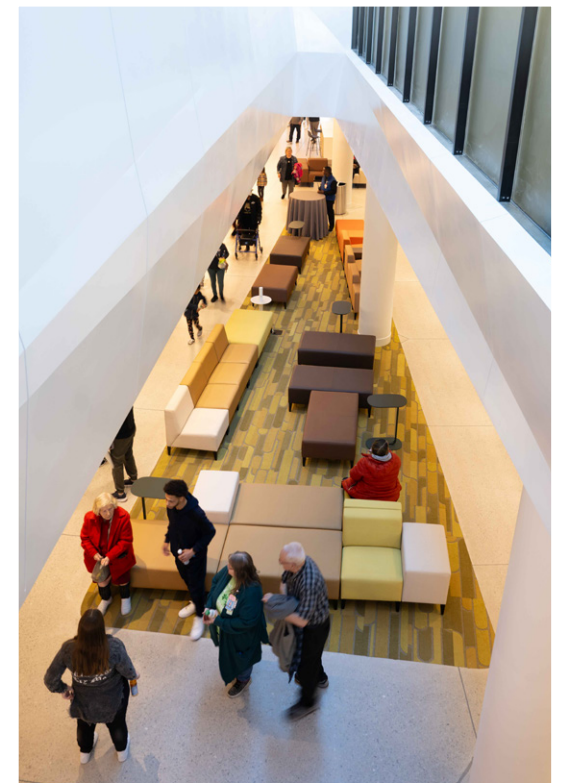


CENTRALIZED REGISTRATION - SECOND FLOOR

CHANGE Enduring Adaptability: The facility uses a “flexible clinic pod model” with six identical, interconnected pods that allow medical services to expand or contract without the need for structural renovations.

ENERGY Performance: The building’s orientation and layout contribute to energy savings. By positioning the building mass on the north and south sides and incorporating strategic glazing on the east and west, the design maximized daylighting in public spaces.

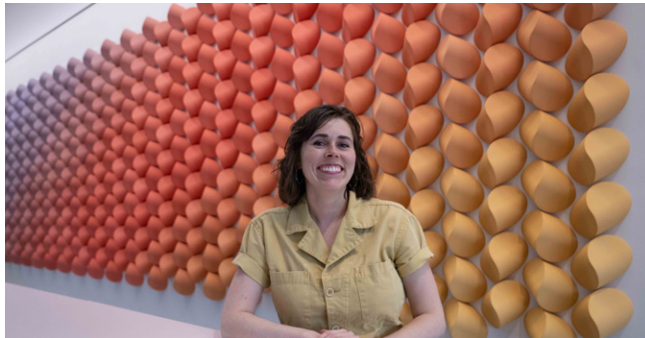
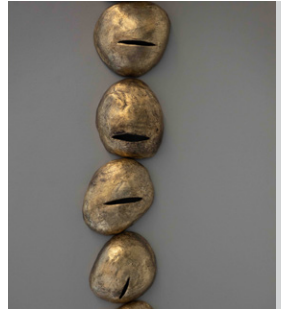
CHANGE Community Integration: Beyond clinical care, the campus prioritizes social services and local partnerships—exemplified by using furniture from Purposeful Design, a local nonprofit that employs individuals overcoming addiction and homelessness. (Registration Check-in Cubicles)



INVESTMENT IN ART TO BUILD COMMUNITY AND FOSTER WELLNESS

Featuring 92 Original Artworks Designed By 51 Indianapolis Artists

Patients and visitors at Eskenazi's new east side clinic can experience a truly impressive collection of original art. 92 artworks by 51 Indianapolis artists, many with ties to the neighborhood, are on display. The ambitious collection rivals the works of living Hoosiers found in the city's galleries and museums. This represents the latest chapter in Eskenazi's long-standing commitment to public art, a tradition spanning over a century. Art can improve health outcomes and bring a sense of safety and connection to patients. This makes the artwork a pivotal element of the facility's welcoming atmosphere.



EQUITABLE COMMUNITIES Future of Healthcare: The campus design integrates key strategies identified in visioning sessions, creating a healthcare environment where the community and healthcare providers collaborate to advance health equity.

INTEGRATION Public Spaces: Centralized public lobbies, registration areas, and waiting spaces open directly to the street corner, filled with daylight and community energy, blurring the line between healthcare facility and neighborhood gathering space. The campus was co-created with the people it serves.



COMMUNITY LOBBY

ENERGY Strategic Daylighting: Rather than a traditional large atrium, the layout uses two smaller light wells and specific building orientation to pull natural light deep into the core while minimizing cooling loads.

EQUITABLE COMMUNITIES Community-Centered Design: Developed through extensive local engagement, the facility serves as a "Third Place" for social connection, community pride, and entrepreneurship.

WELL-BEING Music Providing Healing Environment: A baby grand Yamaha piano resides on the first floor and is open to the public for spontaneous playing in addition to select scheduled performances.



TEACHING KITCHEN

EQUITABLE COMMUNITIES Integrated Wellness Features: The site includes non-traditional healthcare amenities such as an urban farm, teaching kitchen, walking paths, and a technology hub.

WATER Indoor Efficiency: Water-conserving fixtures and plumbing design reduce indoor water consumption by over 25% against the baseline aligning with LEED water conservation requirements.

INTEGRATION Nutrition & Food Access: The kitchen supports a “food as medicine” approach, often collaborating with the on-site urban farm for fresh, seasonal ingredients. Workshops are offered to teach residents how to cook healthy, nutritious food.



FIRST YEAR IN REVIEW — 2024 - 2025

Eskenazi Health Foundation celebrated one year of impact at Thomas & Arlene Grande Campus—a place where community, compassion and care come together. As this milestone is marked, Eskenazi Health looks ahead with gratitude and optimism for many more years of healing and hope this campus will bring to Indianapolis' east side.



25,117

Patients Received Federally Qualified Health Center Services

1,153

Unique Clients Were Served By Sandra Eskenazi Mental Health Center & 555 Same-Day Intakes Were Completed

1,333

Patients Were Supported By Staff From The Ben Pecar & Leslie Thompson Financial Counseling Center

170,361

Prescriptions Were Filled At The Eskenazi Health Oklak Family Pharmacy

8,175

Visits to Eskenazi Health Rehabilitation Services Were Completed

7,662

Food Vouchers Were Distributed As Part Of The Screening For Social Determinants Of Health

7,668

Patients Were Served By Eskenazi Health Imaging Services

495

Hours Of Lifestyle Medicine Groups Were Hosted In The Franchi Family Wellness Studio

