

COMPACT CONTEMPORARY

Category: 3 - Preservation/Adaptative Reuse/Renovation

Project Type: Private Residence

Project Address: 910 W Shore Drive, Culver, IN 46511

Substantial Completion: March 2021

Architect's Statement:

The dream. A relaxing lake home. Views of the water. A place for family gatherings. A clean and contemporary, inviting weekend retreat. These were the wishes of an Indianapolis family searching for this ideal lake setting.

The dream turned into reality with the purchase of an existing compact cottage on a pristine lake in Northern Indiana, fulfilling their expectations, except for the contemporary vibe, and its 860 square foot First Floor imprint. The challenge to the Architects: convert this 1,280 square foot bungalow, containing three-bedrooms, one bath... into a three bedroom 3 ½ bath lake home, without a building addition. Most importantly, incorporating a clean design with a contemporary feel for their family lifestyle. The home, built in the 1930's, needed updates. Living areas were compartmentalized and disconnected. The main entry was through the Kitchen. Interior spaces were dark and outdated. The second-floor bedrooms were small and cramped with the lone bathroom on the first floor.

The solution then became a purposeful annexing of different building elements with a decidedly contemporary reinterpretation of this modest lakefront cottage. This reimagined main living space is now an open and free plan within the small footprint. This compactness is counterbalanced with large openings that enhance natural ventilation, provide quintessential lake living, and make the most of this tight configuration on a small lot. This new family space is now a single space punctuated by a versatile central Kitchen Island which incorporates a surprise hidden pull-out dining table. This disappearing surface is mounted to a telescoping pick-up truck cargo slide system on a steel frame concealed in the island. This reinvented design solution allows the table to cantilever out in two-foot increments to its full length of eight feet, without legs. This design move allows the table to be out of sight and out of the way between family meals.

A 16-foot-long multi-slide glass pocketing door opens up the home and connects to the exterior living space. As the only addition to the existing footprint, the new deck extends the living space which provides the ideal place for sunbathing during the day, and family conversations while observing the stars at night. Like the cabins on a ship, bedrooms and connecting baths are compact and efficient as they slide under the existing roof line, maximizing every square inch of the existing space.

The Compact Contemporary Cottage is a tale of transitions. A conscious orchestrated arrangement of simple, clean architecture. A cleansed interior, along with a refreshing crisp exterior completes the whole. A story of architecture transitioning and enhancing a sense of place. A new spirit, creating a respite and inviting home for family and friends. A new beginning in a contemporary home that is grounded with its surroundings, sitting serenely on the lake, nestled amongst its established neighbors, protected by hundred-year-old trees.

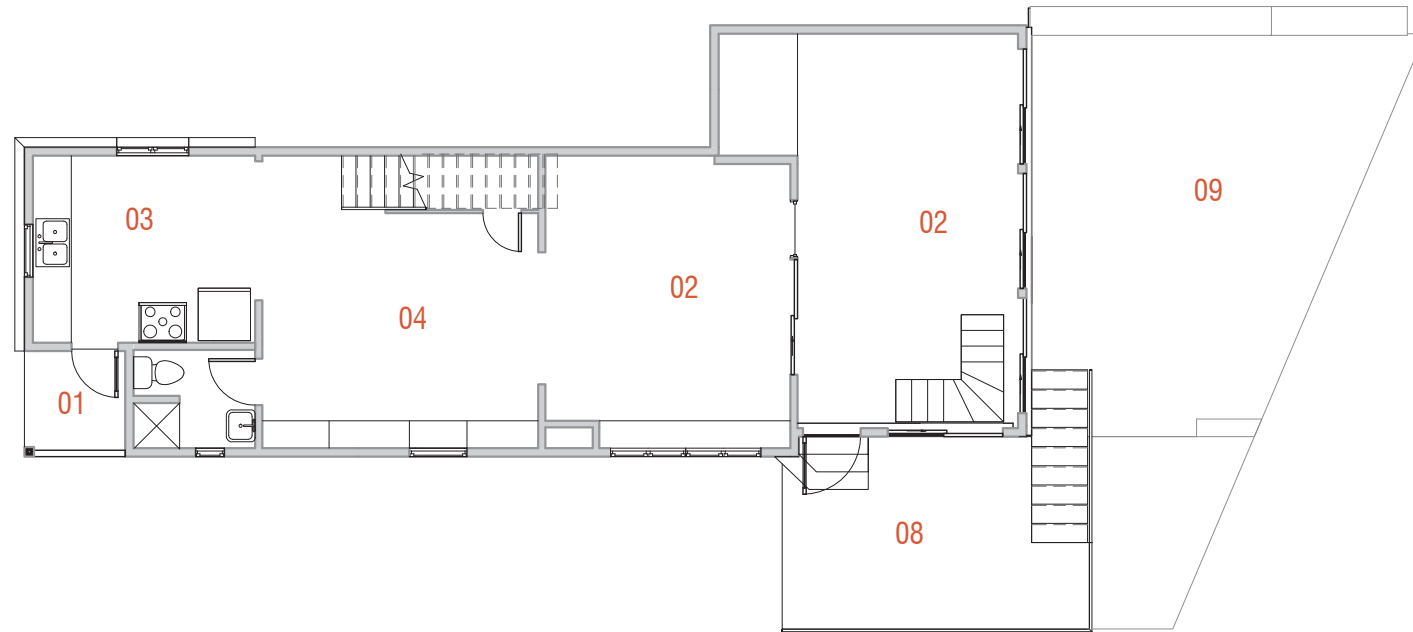
Sustainability Statement:

The inclusion of sustainable materials was of importance to the owners in the final design. A conscious decision to retain the existing structure was the main driver for sustainability. The existing footprint was maintained to preserve the landscape and to not disturb the lakefront. Contributing features include improved insulation, premium performance glazing systems, and LED lighting throughout.

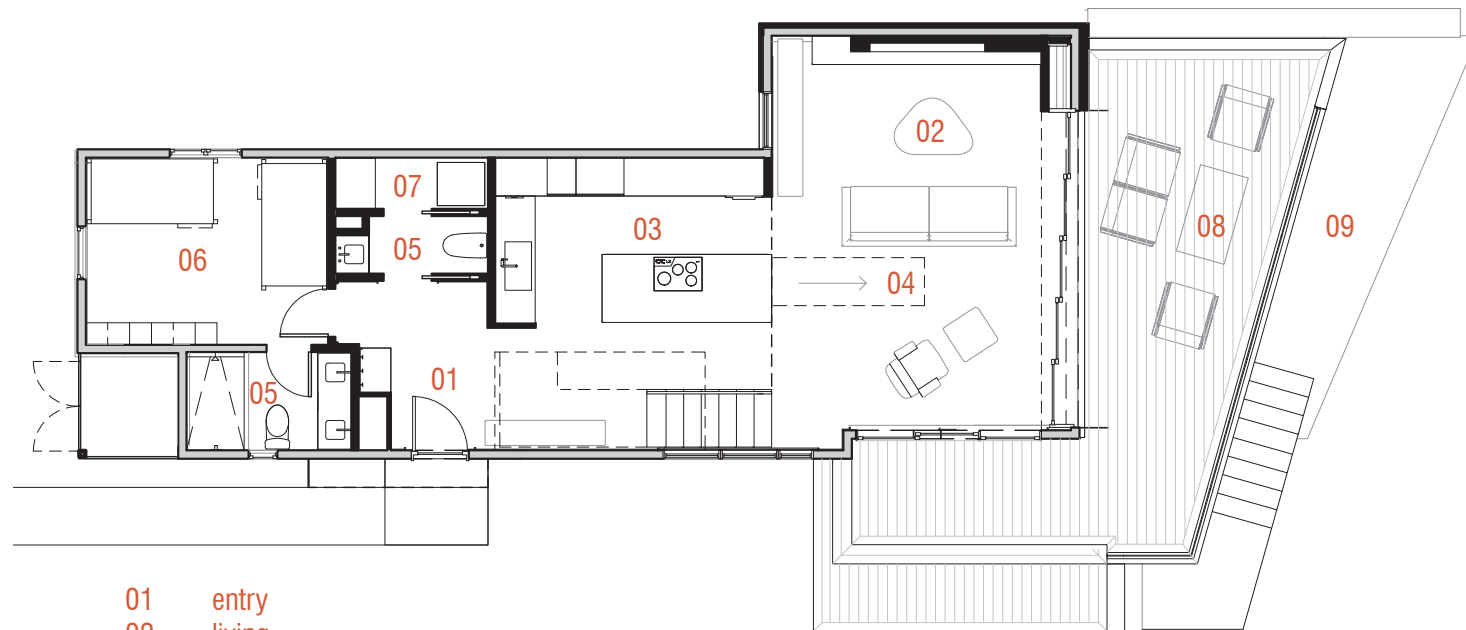




PREVIOUS FIRST FLOOR



NEW FIRST FLOOR



- 01 entry
- 02 living
- 03 kitchen
- 04 dining
- 05 bathroom
- 06 bedroom
- 07 laundry
- 08 patio/deck
- 09 lower patio



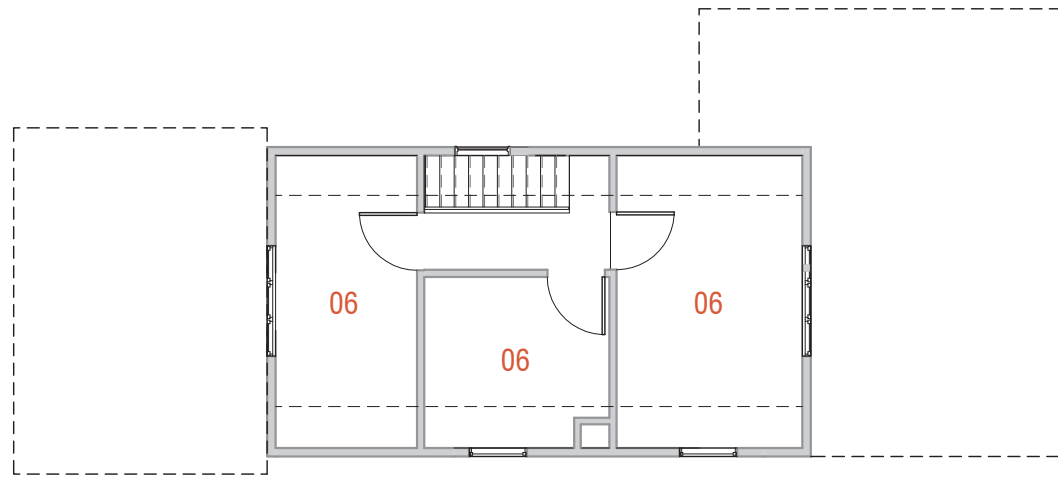
PREVIOUS



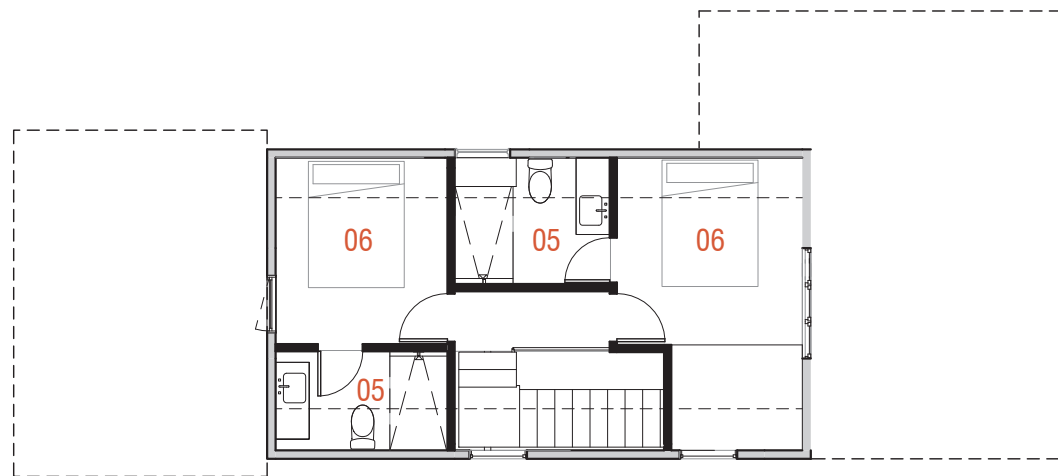
PREVIOUS



PREVIOUS SECOND FLOOR



NEW SECOND FLOOR



05 bathroom
06 bedroom

SCALE 5' 20' 40'



PREVIOUS



PREVIOUS

























