

Submission Category:

- PRESERVATION/ADAPTIVE REUSE/RENOVATION

Project Type:

- Single Family Residential

Project Address:

- 11 Thornhurst Drive, Carmel, IN 46032

Date of Substantial Completion:

- May 8th, 2022



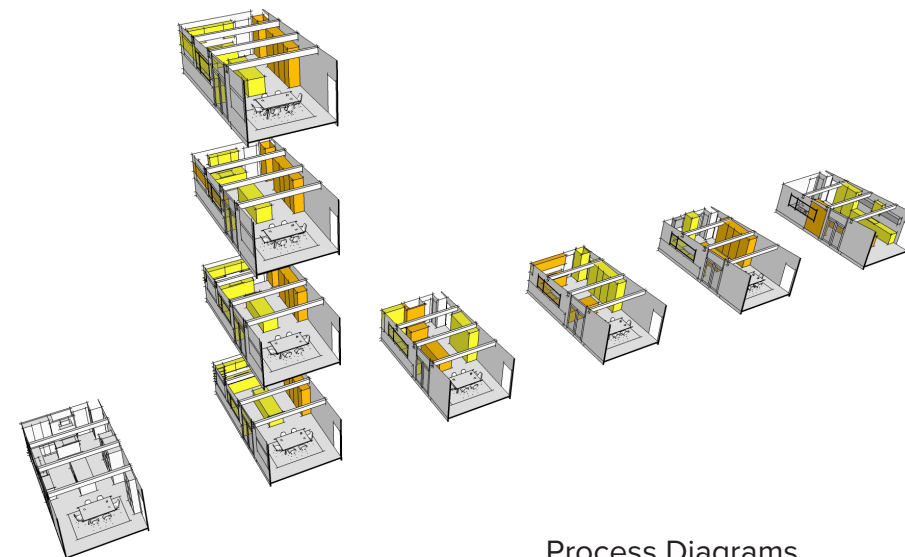
Architect's Statement:

In 1958, Avriel Shull, a renowned female home designer and builder, crafted the Thornhurst neighborhood, a unique collection of architectural masterpieces that embody her distinctive midcentury modern style. Among these, lot number 36, a cherished home, was poised for a sympathetic yet modern renovation. The current homeowners, deeply committed to preserving Shull's legacy, were eager to restore their kitchen to its midcentury origins while optimizing it for contemporary living and entertaining.

The original kitchen, once the heart of the home, had lost its charm and functionality due to previous renovations. The low ceilings, outdated finishes, and poorly designed layout were significant obstacles. Despite its size, the kitchen could have been used more efficiently, but the refrigerator was placed away from the main work area. The connection between the kitchen and the beautiful private garden, with its mature trees providing a peaceful setting, was limited to a single slider patio door that replaced the original door and sidelight. The dining area, devoid of its views and covered in wall paneling, needed a refresh and a reconnection with the outdoors.

Our team, entrusted with the task of reviving Shull's midcentury vision, embarked on a journey to reimagine what a modern Avriel would have created for this Thornhurst gem. We carefully selected durable materials that Shull herself might have favored: natural woods, cork flooring, and expansive glass elements to bring the outdoors in, mainly to take advantage of daylighting. We restored a seamless connection between the indoor and outdoor spaces but limited direct solar gains by strategically placing the large windows under the cover of the generous eaves. The dining area now offers panoramic views of the garden, and the new kitchen layout improves flow and functionality while also providing scenic views. The refrigerator, now conveniently located within the main work area, and the overall spatial reconfiguration ensure that multiple people can easily navigate the kitchen. The result is a testament to our successful reimagining, a bright, functional space that pays homage to Avriel Shull's midcentury legacy while meeting the modern needs of its residents.

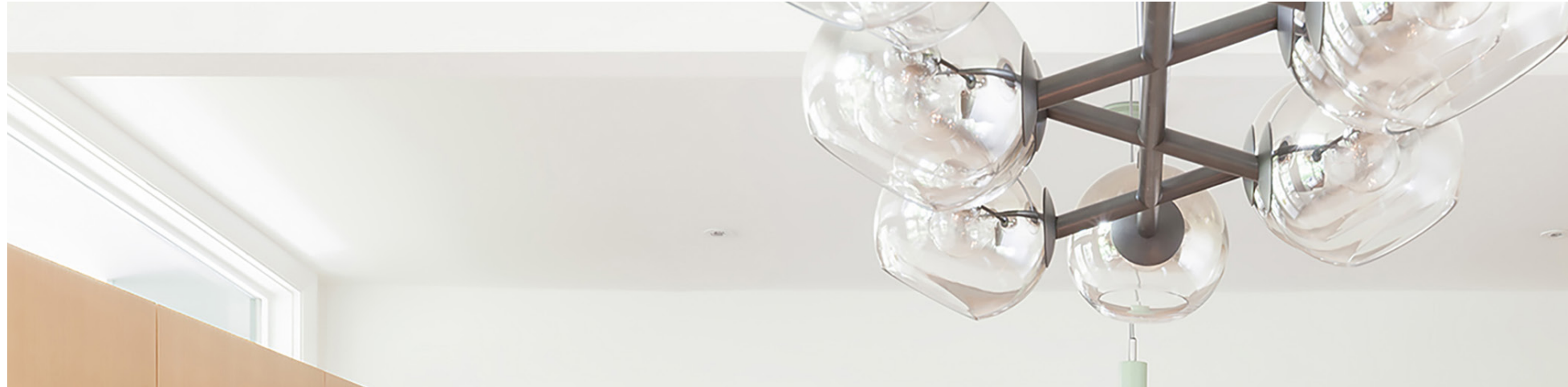
Other notable highlights from the renovation include removing and abating asbestos flooring, reusing existing structural elements, and adding adequate ventilation to remove pollutants from the home. The selection of all-electric appliances ensures the home is ready for the future as we transition to a cleaner grid. The rapidly renewable cork flooring provides occupant comfort as a soft material underfoot. The cabinetry materials are sustainably harvested, free from formaldehyde and other toxic adhesives, and fabricated from plywood rather than compressed fiberboard to ensure long-term durability.



Process Diagrams



Thornhurst Kitchen Revival restores the home's mid-century modern charm while optimizing functionality and natural light.





The spacious layout is enhanced by natural tones and materials, including stone, wood, cork, and glass.



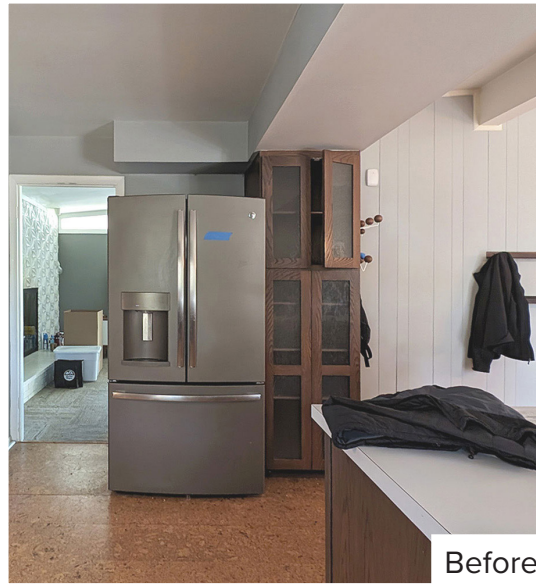
Before











Before



The addition of a wet bar provides our wine connoisseur clients with a dedicated space to display bottles and entertain guests.











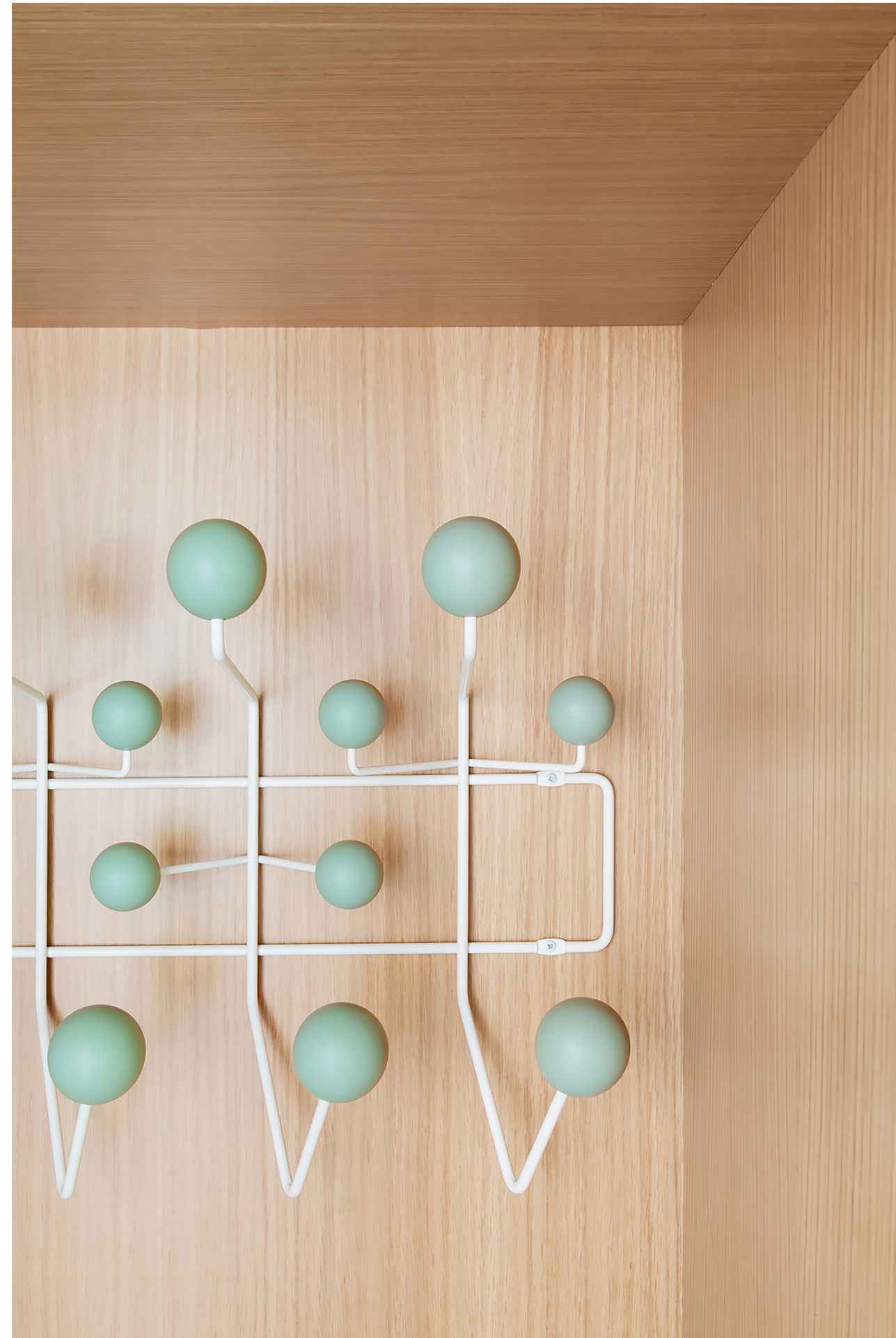




Large windows provide panoramic garden views, creating a seamless indoor-outdoor connection without compromising storage.







Matching green accents throughout the kitchen add a subtle, personalized touch and further emphasize the indoor-outdoor connection.