

LAFAYETTE PUBLIC SAFETY CENTER

Category: New Construction Greater than \$5 Million
Project Type: Municipal Building
Address: 601 Columbia Street, Lafayette, Indiana 47901
Substantial Completion: May 2023





DESIGN NARRATIVE

Given the complex feelings surrounding policing in the US today, how does a design team create a public safety facility that fosters community healing, promotes safety, and encourages community involvement?

The new \$51 million, 70,000-sft Lafayette Public Safety Center takes a unique approach to function as both a public safety center and a community gathering space for the City of Lafayette, Indiana, where the community can have positive interactions with police officers.

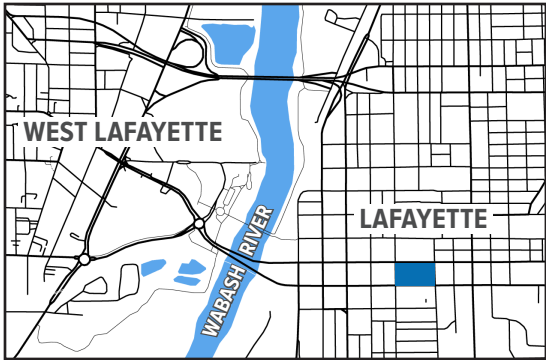
Safety is one challenge, but bridging that with a welcoming environment is a more complex. Yet, this project creatively creates moments where openness and access to the public meet secure and private information. Designing a facility in which police personnel could engage the public was a key goal of the city administration. In response to that goal, the main entrance features a wide-open lobby space with a 2-story unrestricted access to the public, including amenities such as a community room, outdoor plaza, and outdoor movie screen. Yet, in that same space, are inconspicuous entrances, shielded from public view, for victims of crimes to find refuge and safety. Though the lobby appears open, hidden in plain sight are bullet-resistant barriers that allow officers to conduct business safely.

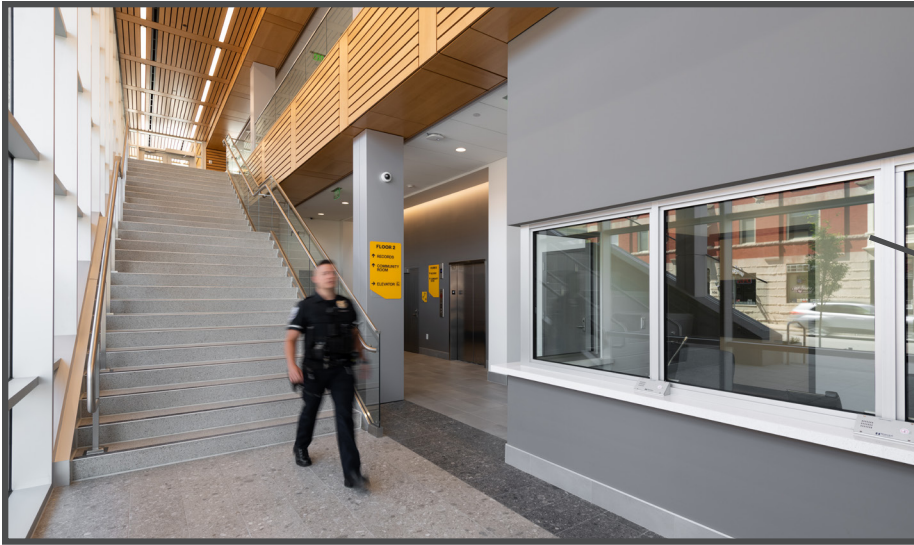
These public amenities were not simply interjected into the design by the design team; rather, they were conceived during robust public engagement throughout the whole process. Leveraging modern technology, such as virtual reality and digital public display boards to actively engaging in public forum meetings with Lafayette residents, our diverse team of architects, engineers, construction partners, and consultants designed with high levels of community engagement at every step of the way.

With such a historic and rich culture downtown Lafayette offers, the design team actively worked to sensitively choose materials from the surrounding context of other buildings, preserve a historic façade with complete accuracy, and include the latest crime prevention technology for both community and officer safety with infrastructure in place to adapt into the future.





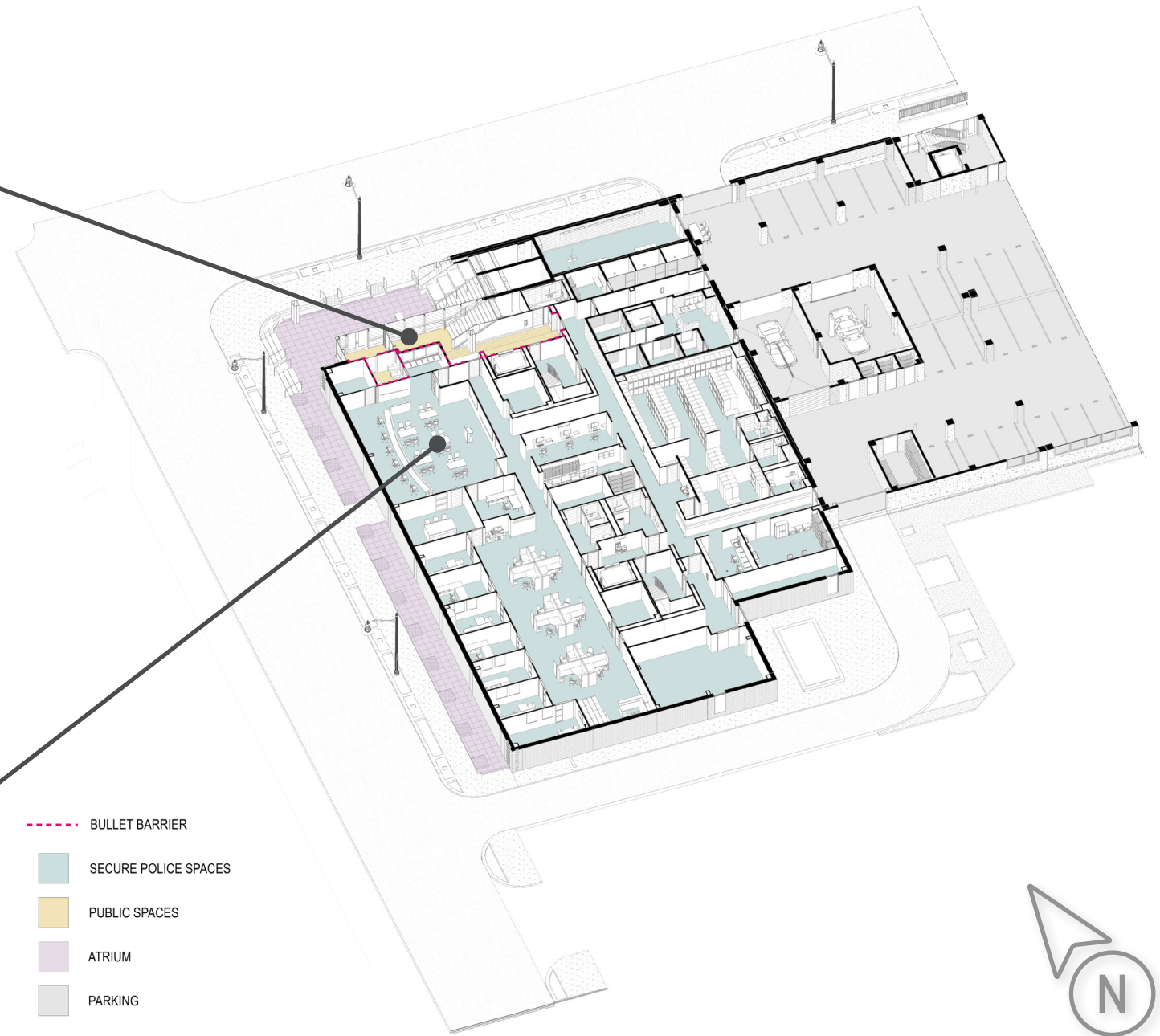




PUBLIC LOBBY



ROLL CALL





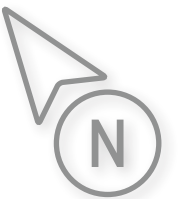
PUBLIC LOBBY



COMMUNITY ROOM



- - - BULLET BARRIER
- SECURE POLICE SPACES
- PUBLIC SPACES
- ATRIUM
- PARKING

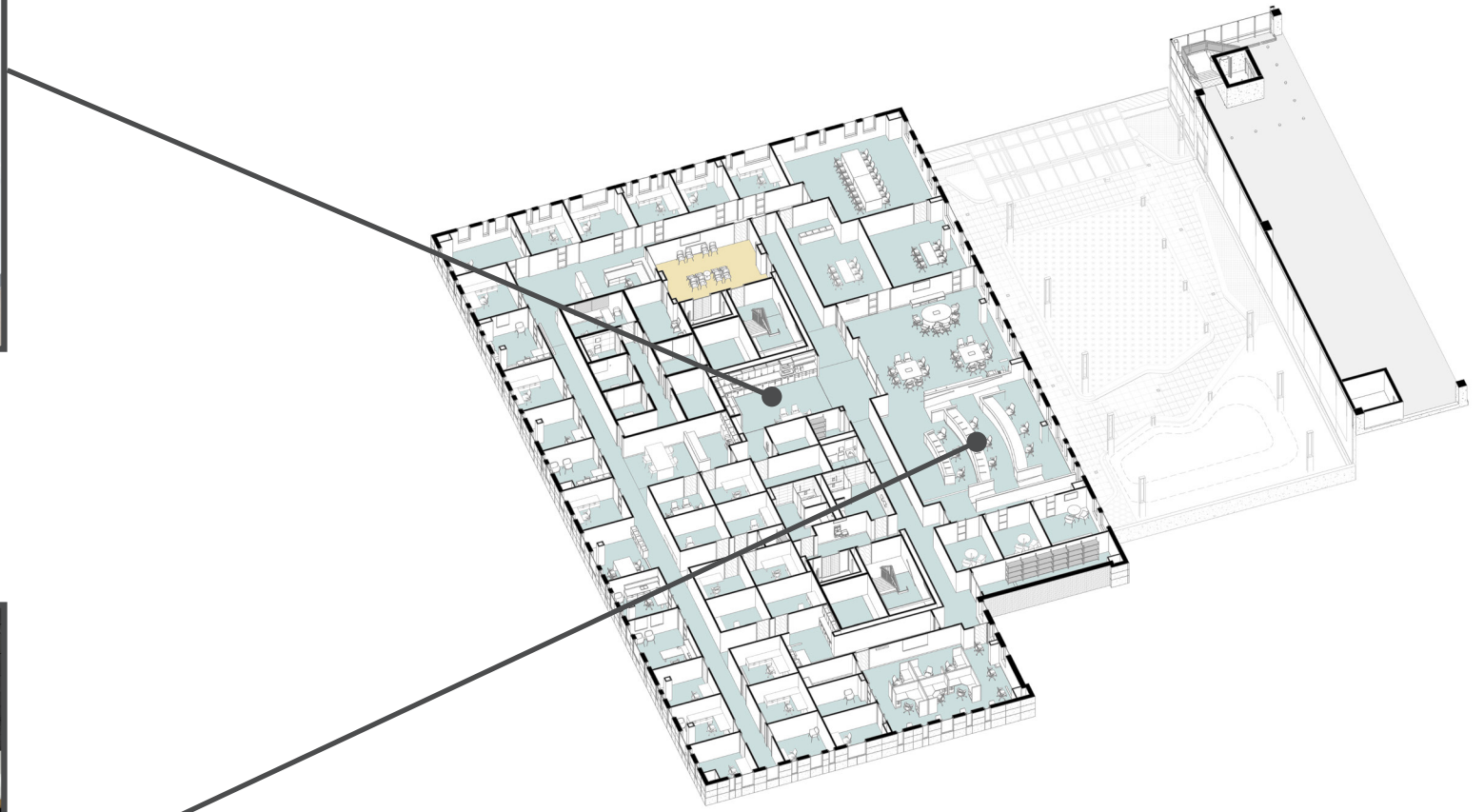




STAFF BREAK AREA



ACTIVE READINESS CENTER

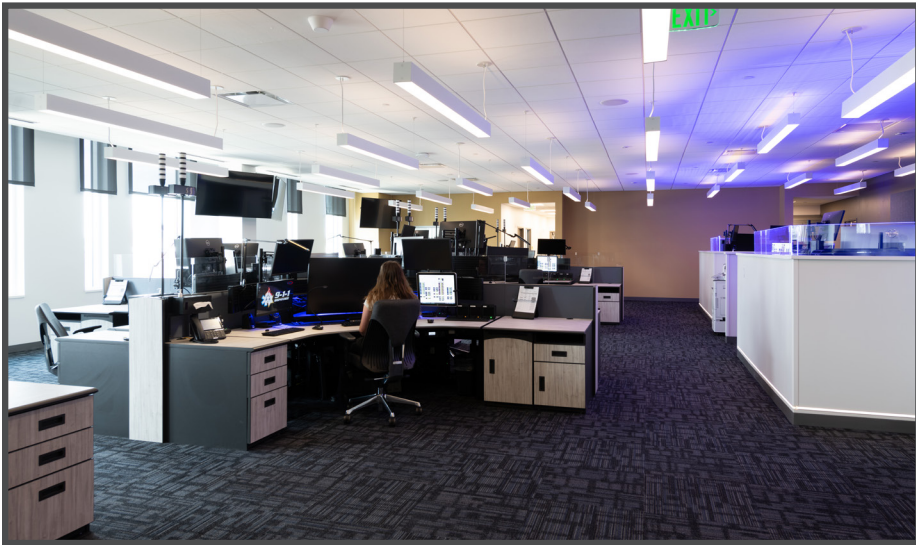


- SECURE POLICE SPACES
- PUBLIC SPACES
- PARKING

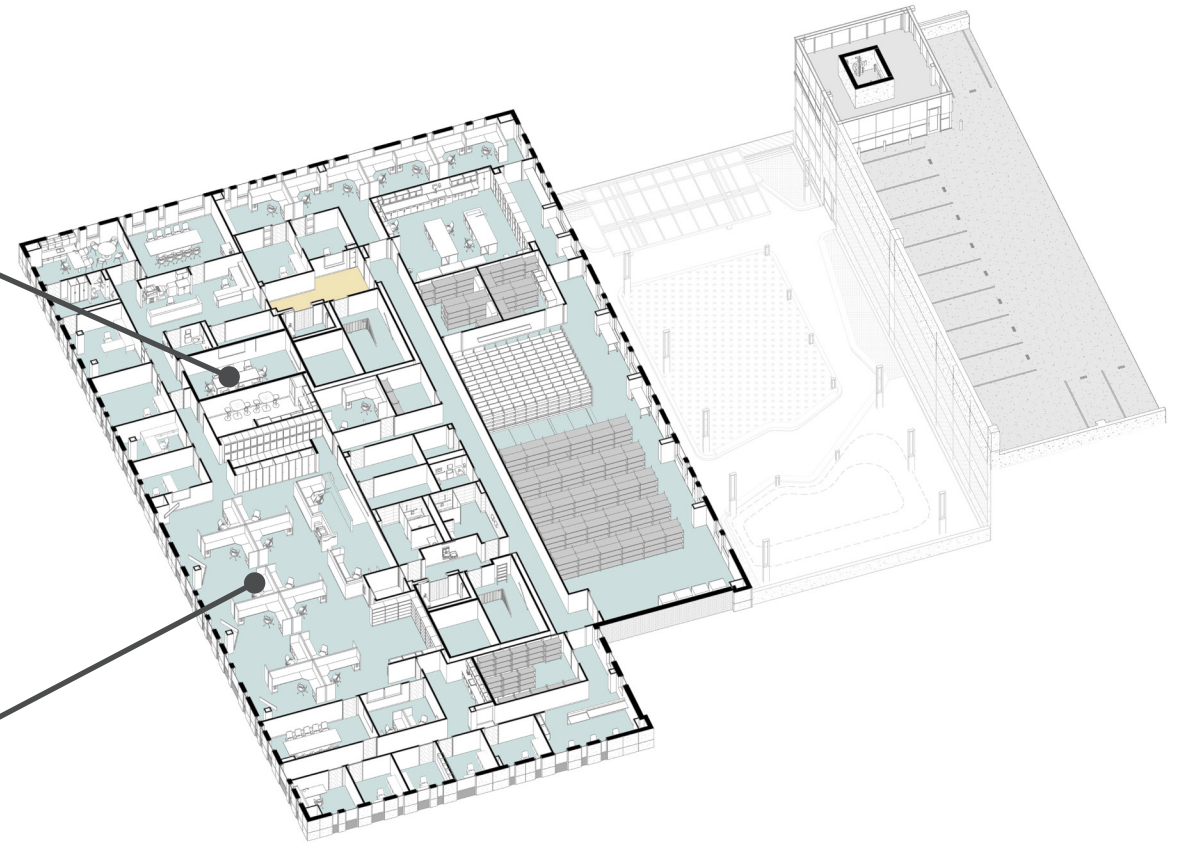




MEDIA ROOM

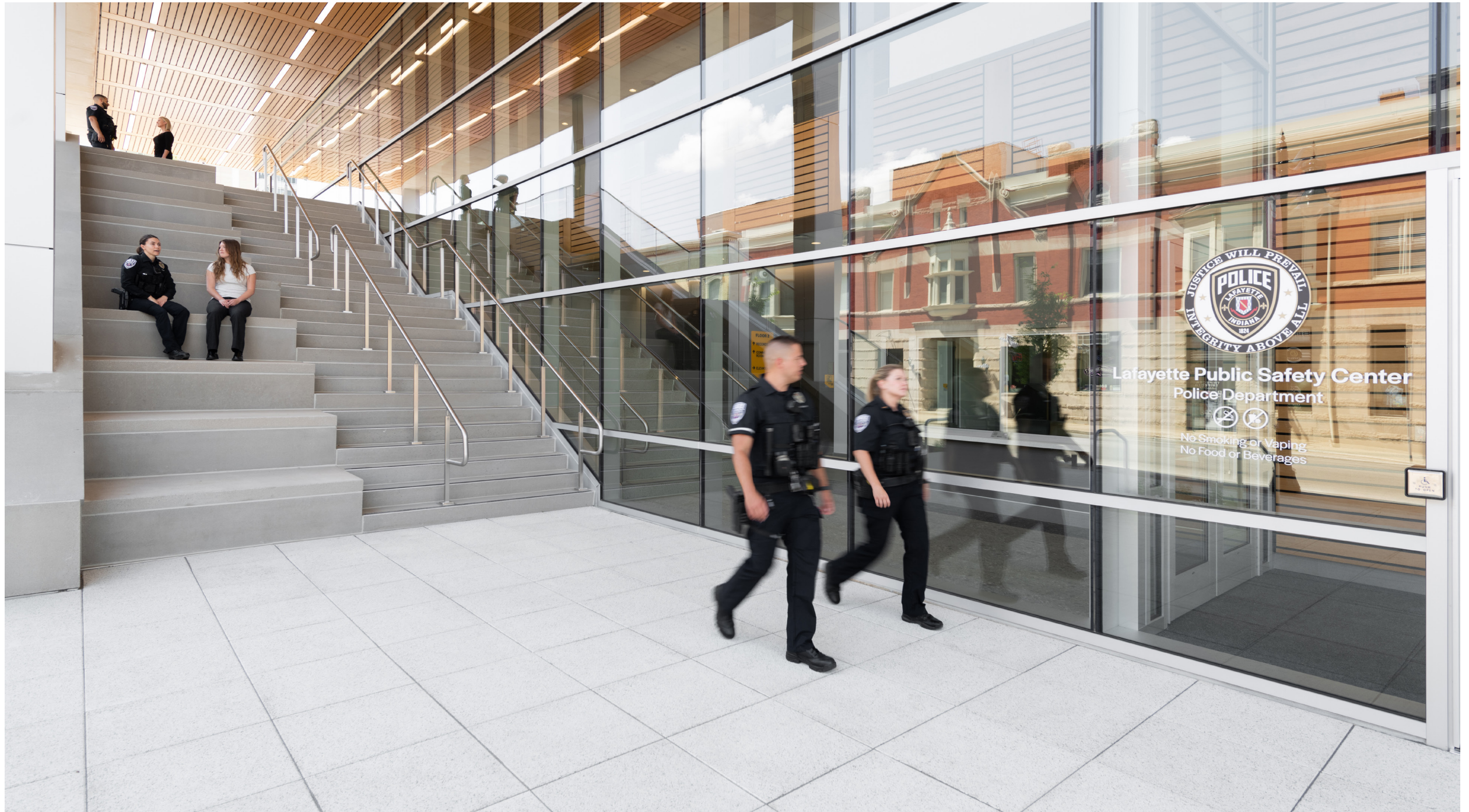


911 DISPATCH



- SECURE POLICE SPACES
- PUBLIC SPACES
- PARKING













Strategic use of glazing allows this building to reduce artificial lighting loads while also creating inviting and welcoming spaces for the public.



Being in a downtown urban core, the elevated green space is working to reduce the heat island effect and improve water management.

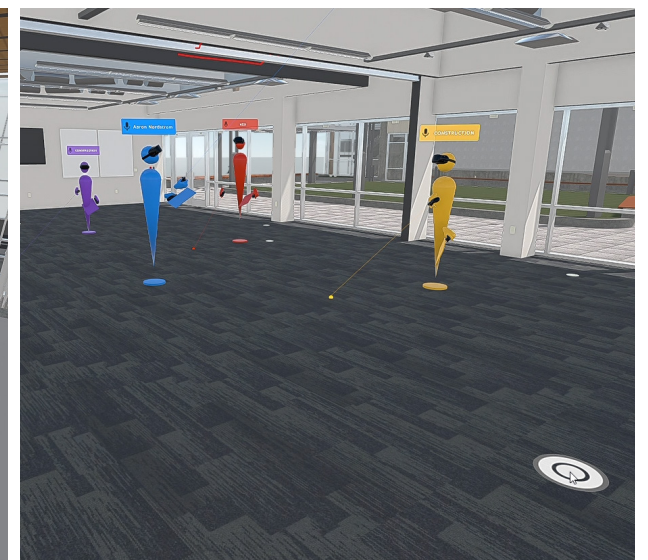
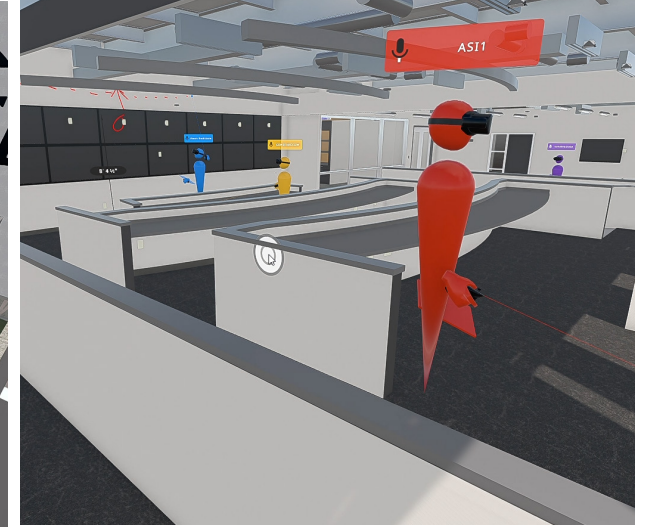


By preserving and recycling the materials from the old building, our construction carbon footprint is reduced.



The array of over 200 (80kW) solar panels is estimated to offset energy usage by up to 40%.

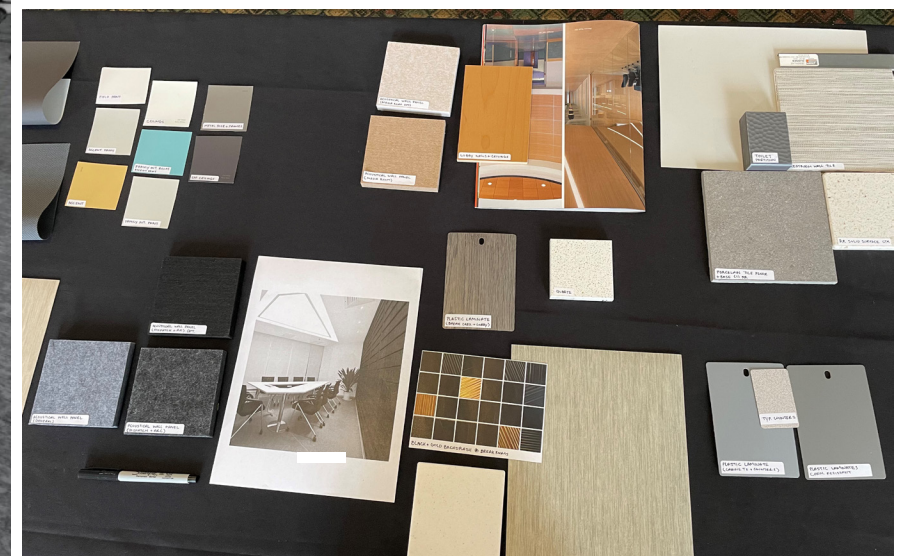




VIRTUAL REALITY

With the design process occurring in the height of the Covid-19 pandemic, in-person meetings with the police staff were limited. The design team utilized virtual reality to make the most of these sessions. A theater in Lafayette was reserved to allow users to navigate the new facility virtually to ensure the design met their needs. Officers were able to walk through the space and complete virtual test runs of critical operations throughout the building. The design team was able to observe the movements and fine-tune the design to assist with the officers' requirements.

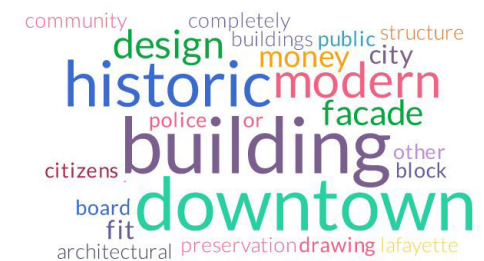
PICTURED: Lafayette mayor and police chief tour the public safety center in virtual reality at the end of schematic design.



COMMUNITY ENGAGEMENT

The Lafayette Public Safety Building is a large investment for the City of Lafayette, and Mayor Roswarski felt strongly that the community of Lafayette should be able to stay informed and provide their opinions throughout the design process. Creating this feedback loop between the community and the design team can be challenging but ultimately very rewarding to the project. The design team opened numerous avenues of communication with the city to allow the flow of information back and forth. SeekBeak provided a platform where the design team could provide project updates and gather comments from the community throughout the design process. A public forum was broadcast live to the community where key information was provided. Physical materials were on display in City Hall where people could see the latest design selections. These measures created a feedback loop that allowed the community to buy into the vision which gathered support for the project and kept the design team informed on what is important to the City of Lafayette. The community feedback most strongly influenced community-oriented spaces and exterior material selections that fit well with the surrounding historical context.

6. What did you like about the images of the new development you have seen?

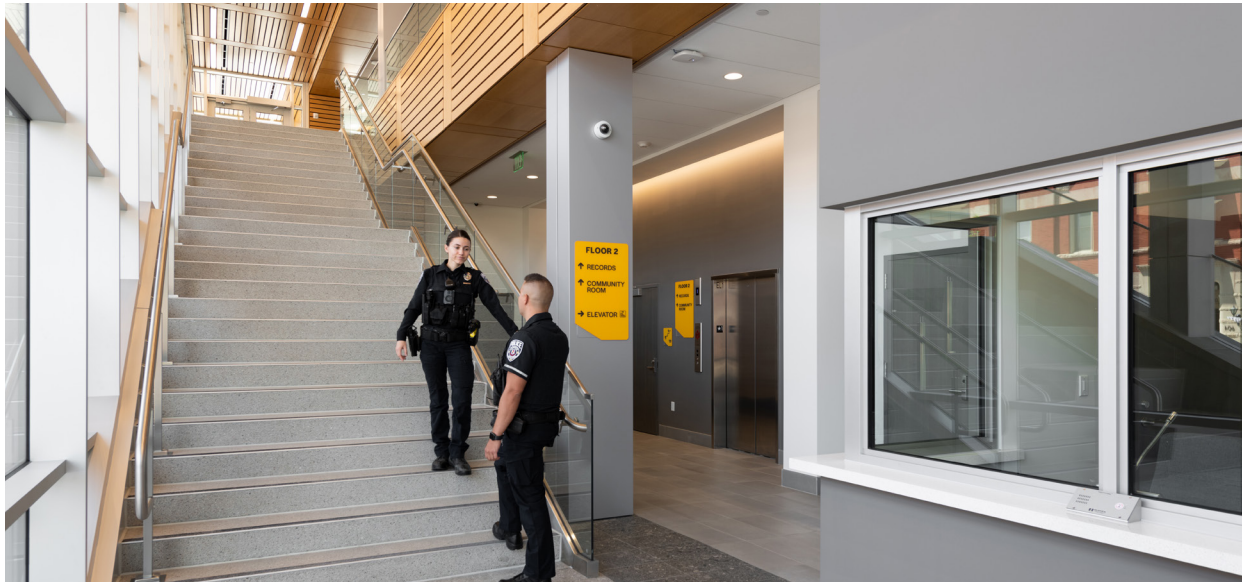




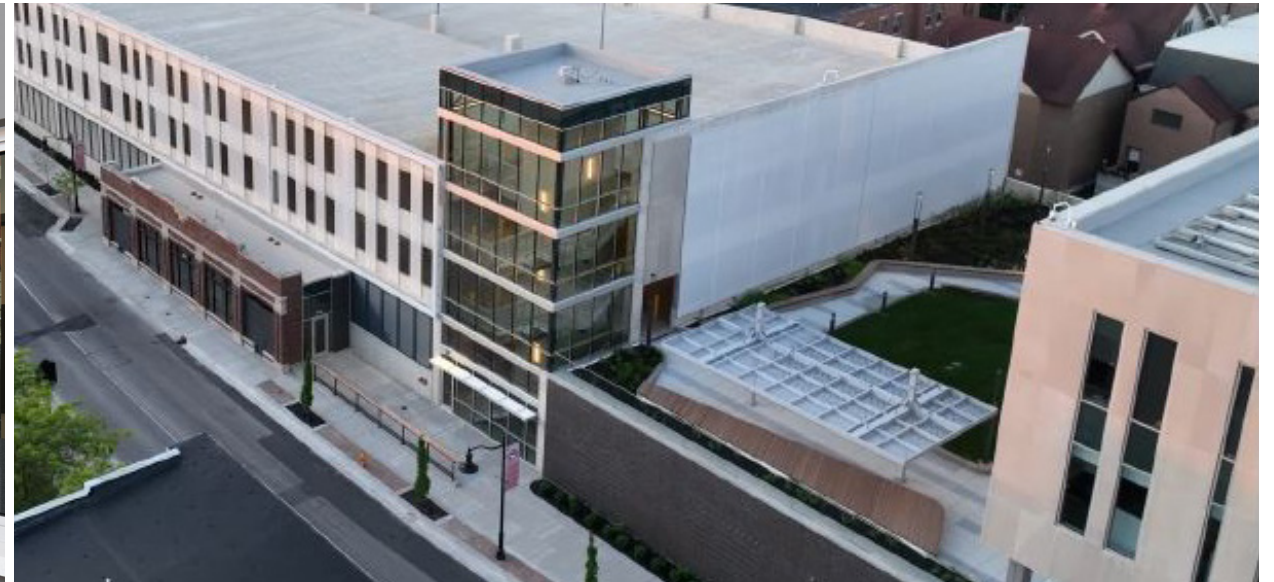
Window locations are designed so that no direct line of sight to any officer's workstation is available from public space. This allows officers to complete their work in a secure environment.



Area connects directly to the public safety center allowing officers to move people and evidence into the facility efficiently and securely.



Bullet-resistant protection exists within the walls that separate public spaces from secure officer work areas. This barrier is unperceivable creating a welcoming lobby that invites the public into the facility.



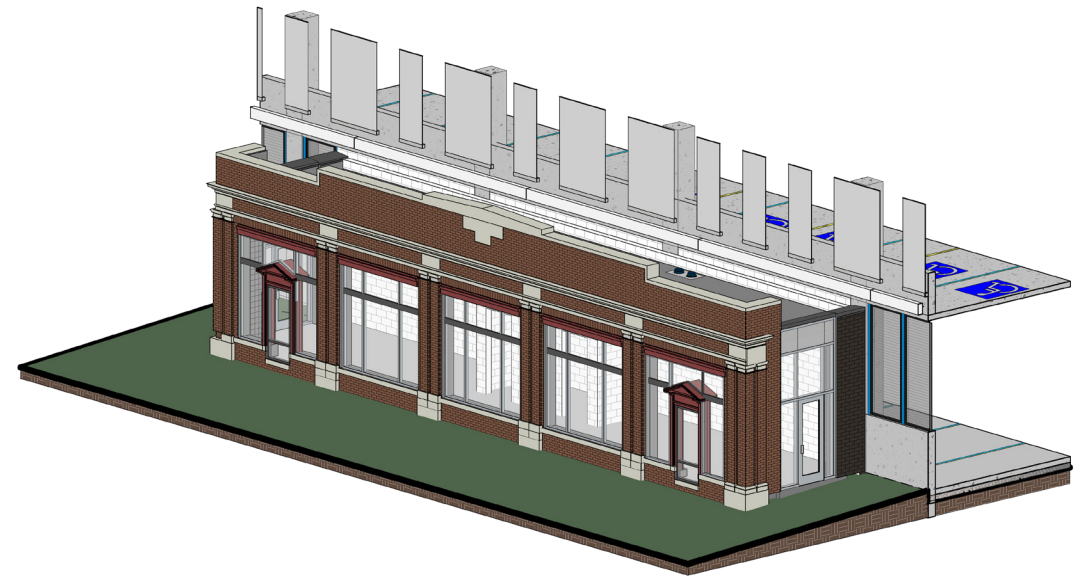
A concrete barrier exists at the edge of the public garage to prevent line of sight into the secure officer spaces. This wall becomes the structure for a movie screen that faces the public plaza turning a security feature into a public amenity that activates the plaza at night.



1. EXISTING BUILDING

HISTORICAL FACADE REPURPOSE

The City of Lafayette wanted to preserve an early-1900s-era brick building with limestone accents on the site of the proposed parking garage. Our team carefully disassembled and preserved the historic storefront and stored the contents off site for over a year. Next, our design team carefully inventoried each item, digitally, to determine how to integrate the front 5 feet of the structure with the proposed parking garage. The results were an accurate reassembly of the historic facade that incorporates a unique micro-retail concept, providing a vibrant space for small businesses and entrepreneurs to showcase their products and services.



2. PRESERVATION PLANNING



3. RESULTS



Lafayette Public Safety Center
Police Department

Columbia St

ONE WAY

More Leases
Serenity
763.387.7521

Walmart

