

CEDAR SHORES HOUSE

Project Type: Private Residence

Project Address: 4401 S Poplar Drive, Columbus, IN 47201

Substantial Completion: April 2022

Architect's Statement

Reflections...as the soft colors of the tree canopy bounce across the lake. The owners sit peacefully and reflect on spending time on this serene lake during their childhood up to this moment. This Chicago couple purchased this property to build their dream lake house. The magic of being drawn to this feeling of being established and settled in this surrounding of calm water and the home's shelter of hundred-year-old trees now feels perfect for their family gatherings.

The design parti shared with the owner focused on simplifying circulation, as a spine organizing the arrangement of spaces harmonizing public and private in a concise design move. This spine runs the entire length of the home from entry, up and down stairs, continuing along this path to the exterior, linking the over-water boat house to the water's edge.

The solution then became a purposeful annexing of different building elements that respect this sense of place through simple volumes and materials. A traditional gable form was envisioned as an extrusion growing from the one-story street side cottage scale, down the hill to engage with the lake. Steel moment frames eliminate horizontal ties, to not interrupt this simple extruded gable expression. A carved-out entry in charred cedar welcomes guests and aligns with the circulation path. Guest suites are set to the side and stacked to offer views of the lake. This cubed volume clad in charred wood is topped with a private Primary Suite roof deck. A total of three materials consisting of board-formed concrete, charred wood, and cedar shingles are utilized for the exterior composition. These maintenance-free materials require no finishing as these materials will patina naturally through time.

The Owners desired an intimate lake home that would feel cozy for the two of them and also accommodate sleeping twenty-three people. The final design incorporates bunk beds in the hall outside parent's bedroom suites, along with murphy beds incorporated in the lower-level millwork to accommodate all guests. Natural light and views were designed thoughtfully. The bunks in the hall receive diffused light through the channel glass, that also glows at night as a lantern upon arrival. Glass for light and views are designed not only for natural light but controlled views in and out. The large glass lens on the south facade offers framed views to the lake while shielding direct views of the interior living spaces from the water. The lower level opens from the entertainment space to the deck and boat house as a continuous indoor/outdoor room. Access to the water is accomplished through a board walk at the water's edge linking the beach, boat house, custom-designed firepit, culminating at the boat slips. The house is a testament to blending all lake activities, both inside and outside.

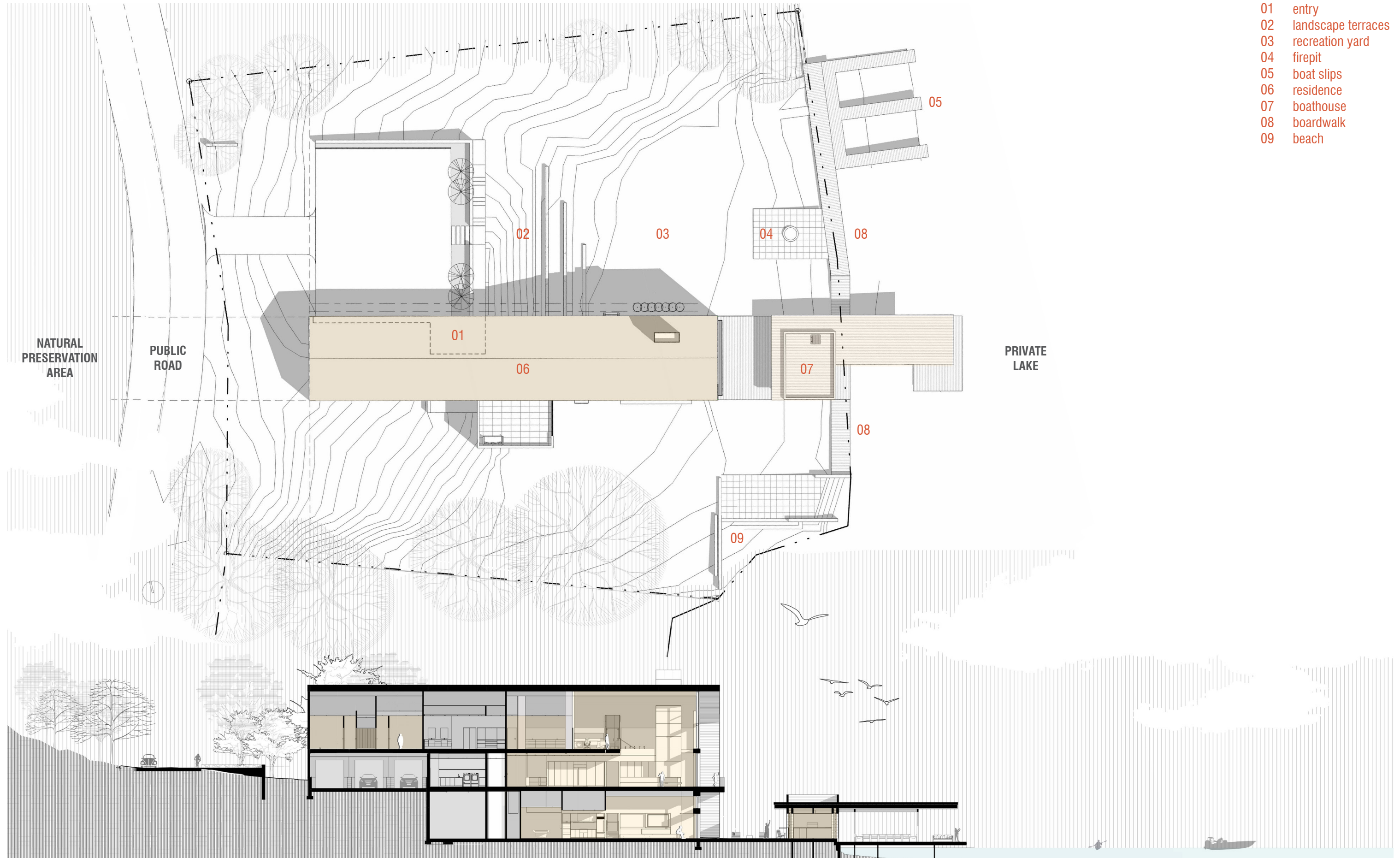
Sustainable and Environmental Design Statement

The inclusion of maintenance-free and sustainable materials was of importance to the owners in the final design. A conscious decision to utilize natural materials along with enhanced building science practices was the main driver for sustainability. Board-formed concrete, sho-shugi-ban charred siding, and cedar shingles will all patina and age as natural materials to blend with the surrounding landscape. Contributing features include an efficient hydronic radiant flooring system for the lower level and snow melt for the motorcourt, improved insulation, premium performance glazing systems, and LED lighting throughout.

The Cedar Shores house is a tale of memories and legacy. A conscious orchestrated arrangement of simple, clean architecture. A cottage inspired exterior, along with a refreshing crisp interior completes the whole. A story of architecture transitioning and enhancing a sense of place. A new spirit, creating a sanctuary for the owners as a legacy project in a contemporary home that is grounded with its surroundings, sitting serenely on a lake, protected by hundred-year-old trees.





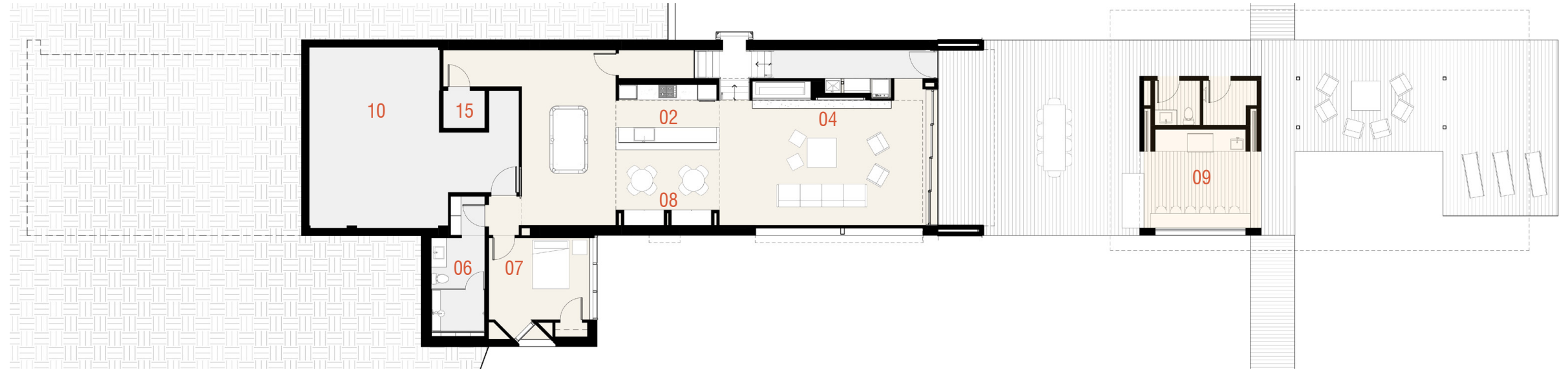


- 01 entry
- 02 landscape terraces
- 03 recreation yard
- 04 firepit
- 05 boat slips
- 06 residence
- 07 boathouse
- 08 boardwalk
- 09 beach



- 01 entry
- 02 kitchen
- 03 dining
- 04 living
- 05 balcony
- 06 bathroom
- 07 bedroom
- 08 murphy beds
- 09 boathouse
- 10 mechanical
- 11 pantry
- 12 wine
- 13 laundry
- 14 garage
- 15 elevator
- 16 loft
- 17 primary bedroom
- 18 primary bathroom
- 19 primary closet
- 20 sleeping bunks
- 21 rooftop patio

LAKE LEVEL



MAIN LEVEL



SECOND LEVEL



















