

WABASH VALLEY POWER HEADQUARTERS

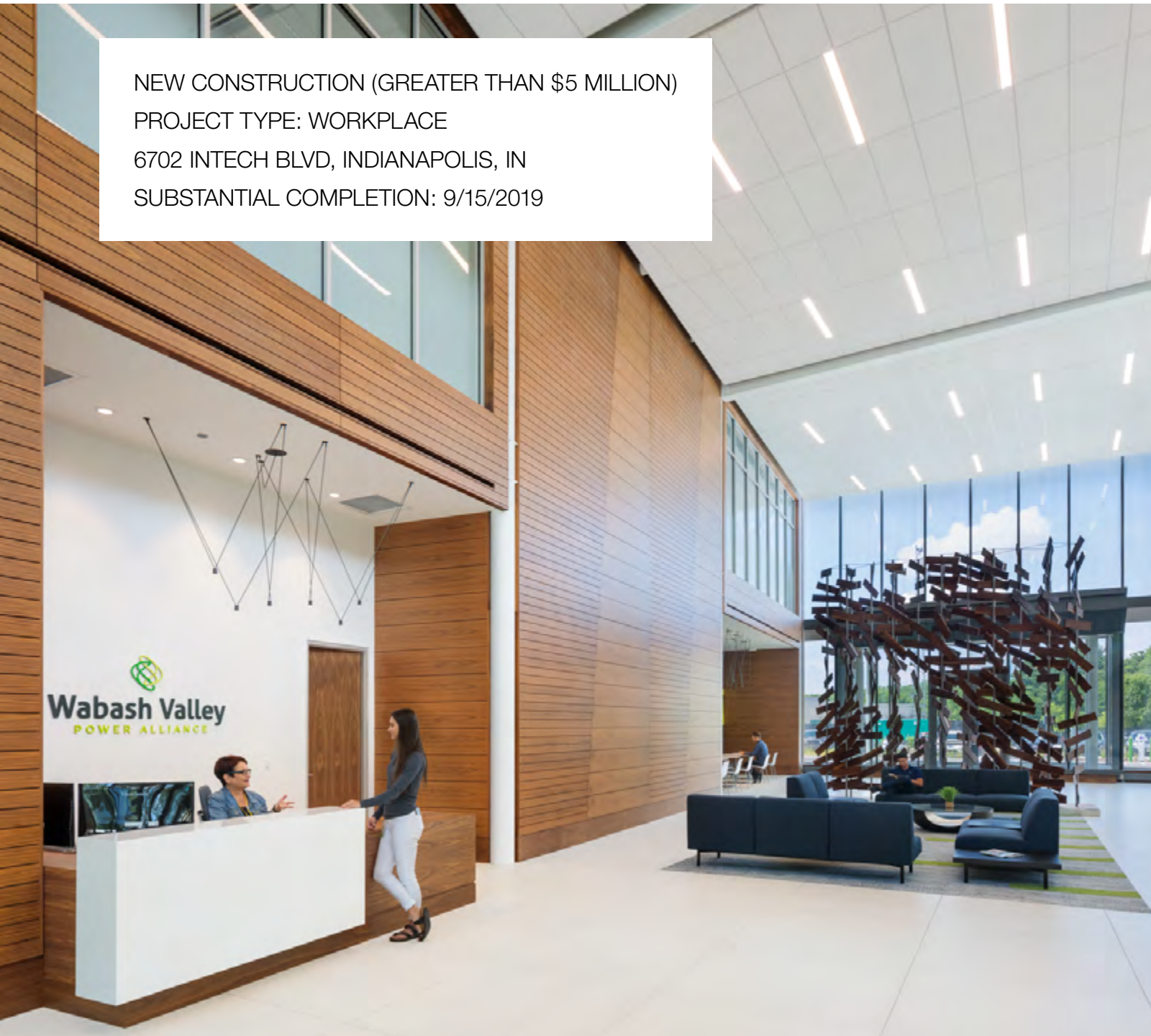


NEW CONSTRUCTION (GREATER THAN \$5 MILLION)

PROJECT TYPE: WORKPLACE

6702 INTECH BLVD, INDIANAPOLIS, IN

SUBSTANTIAL COMPLETION: 9/15/2019



DESIGN NARRATIVE

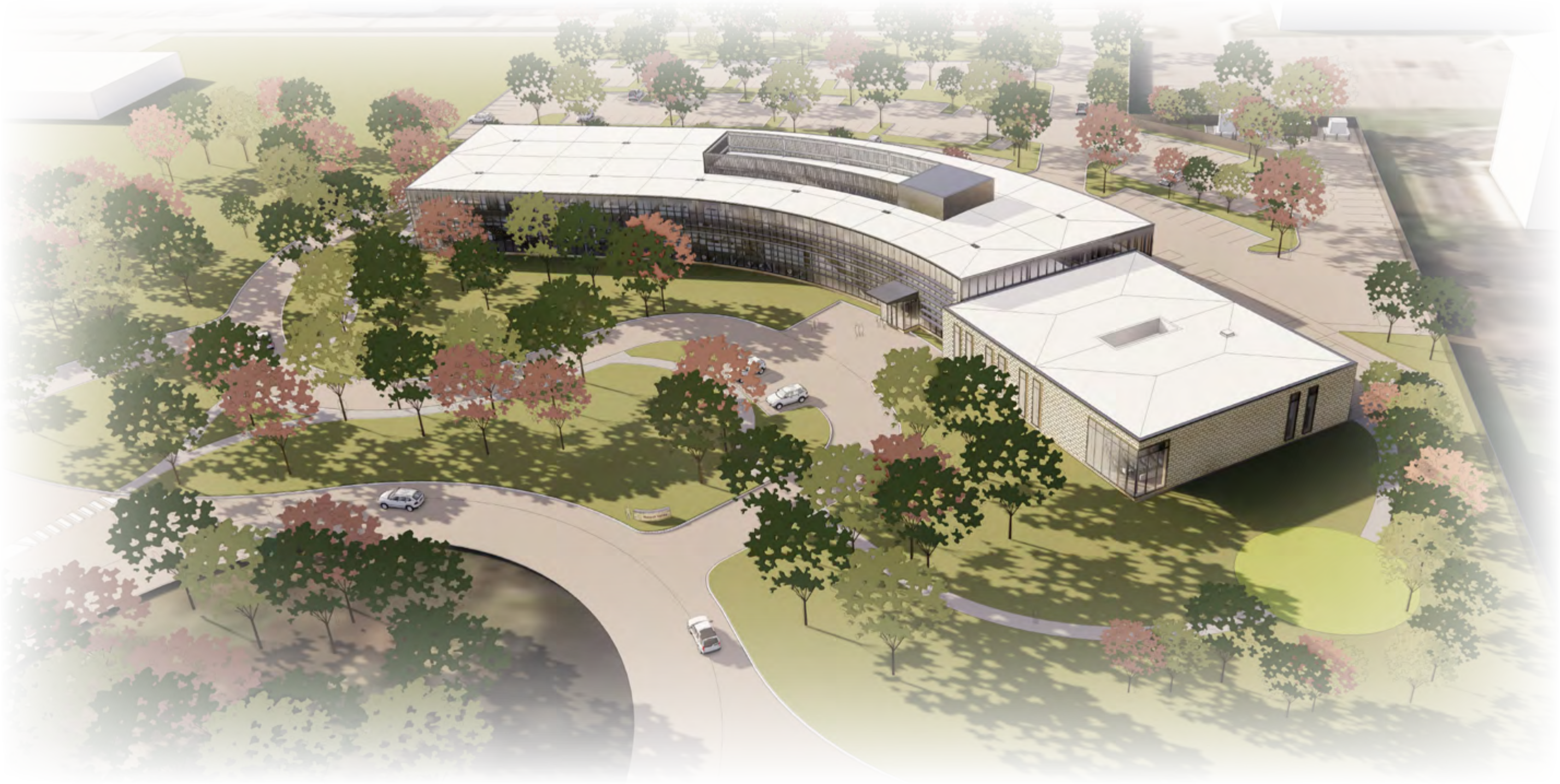
A leader in the Utility and Energy Sector, Wabash Valley Power (WVP)'s new headquarters is designed to be a vehicle for developing new ways of advancing sustainability conscious energy transmission. This state-of-the-art, 60,000 sq. ft. workplace takes its curved form from the roundabout it sits behind, carefully placed on the edge of the site's wooded area to preserve as many trees as possible and represent the duality of the business.

The building organizes itself into two architectural components: the office wing, including its operations center, and a conferencing wing, with a visitor entry through the woods to the east and employee entry to the west. The operations center is the heart of the building with office space extending to the south and the conference center to the north. From the entry lobby, the primary pedestrian circulation finds

itself along the eastern façade allowing all who visit or occupy the space to enjoy the wooded views as they move along the building. This creates a transparency and openness to the floors, making them inviting and bright.

Conversely, the operations center is a secure space clad with Kasota Stone to protect its contents. The primary program of offices, operation command center, conference rooms, and collaboration spaces are collected in a sweeping glass bar that energizes the workplace with far-reaching natural light. The architecture was collaboratively developed with WVP and CW to help position the company for future growth and open engagement with their 23 cooperatives.

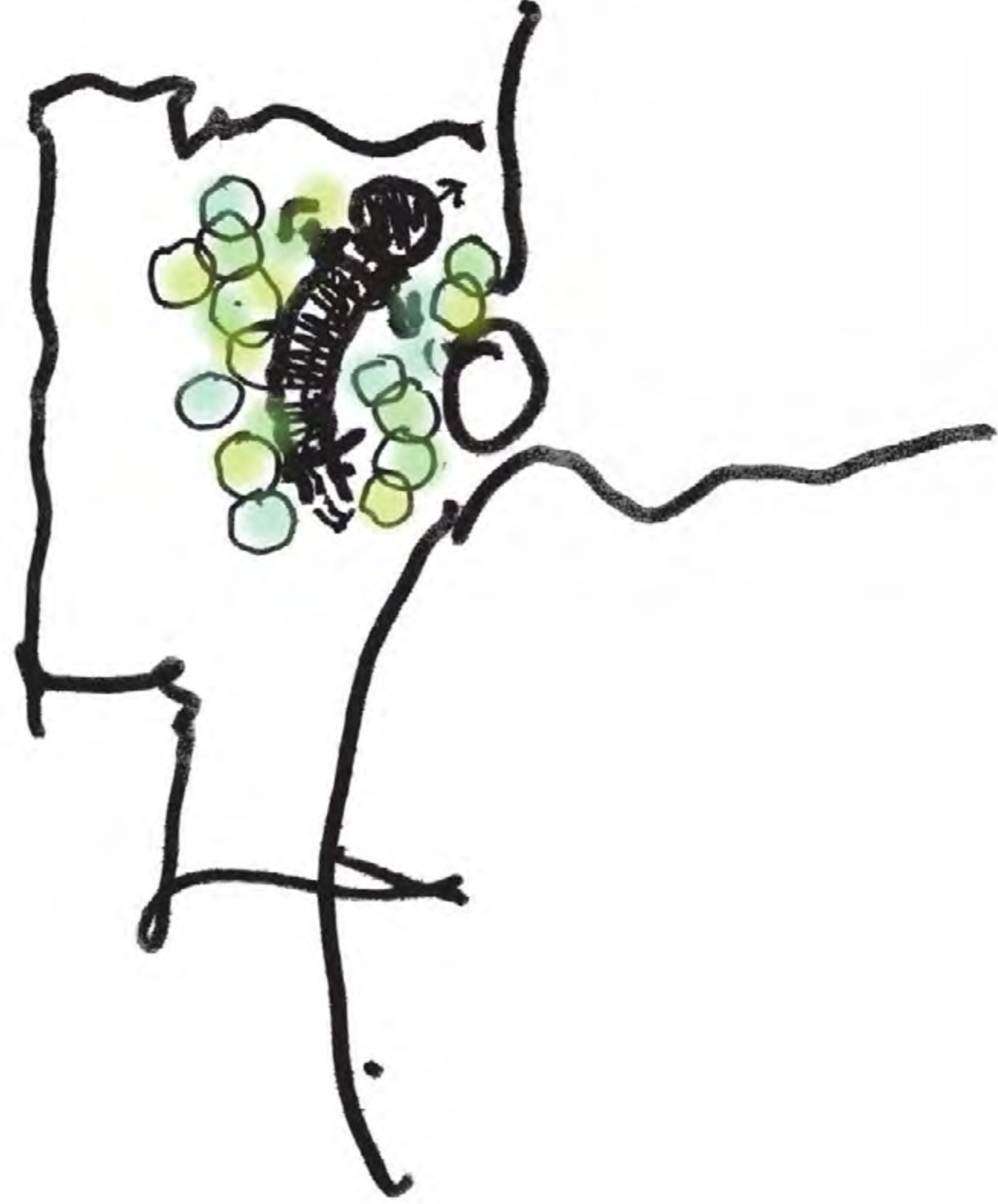
CONCEPT MODEL



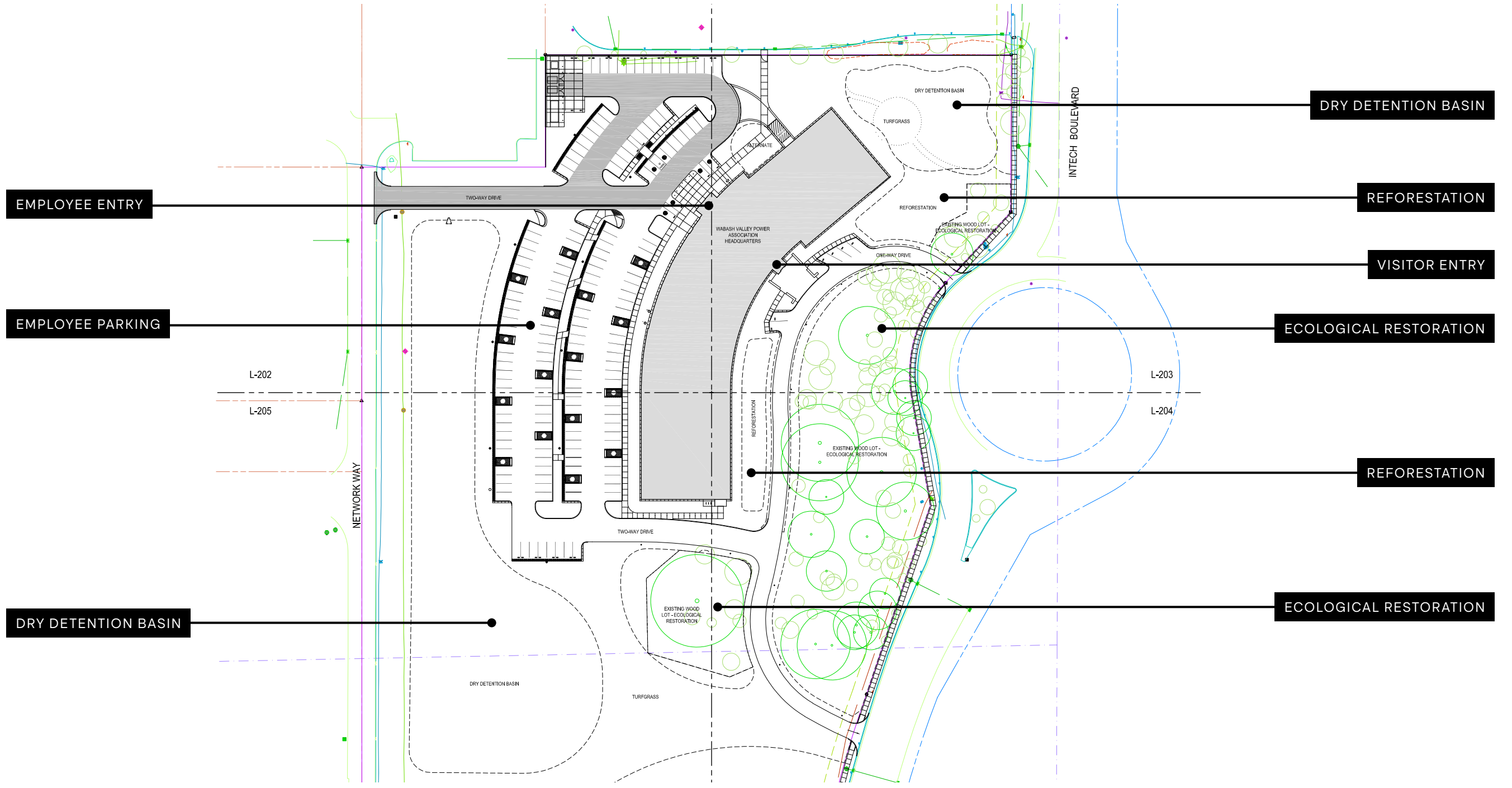
SITE CONTEXT



CONCEPT SKETCH



SITE PLAN



EMPLOYEE ENTRY

EMPLOYEE PARKING

DRY DETENTION BASIN

DRY DETENTION BASIN

REFORESTATION

VISITOR ENTRY

ECOLOGICAL RESTORATION

REFORESTATION

ECOLOGICAL RESTORATION

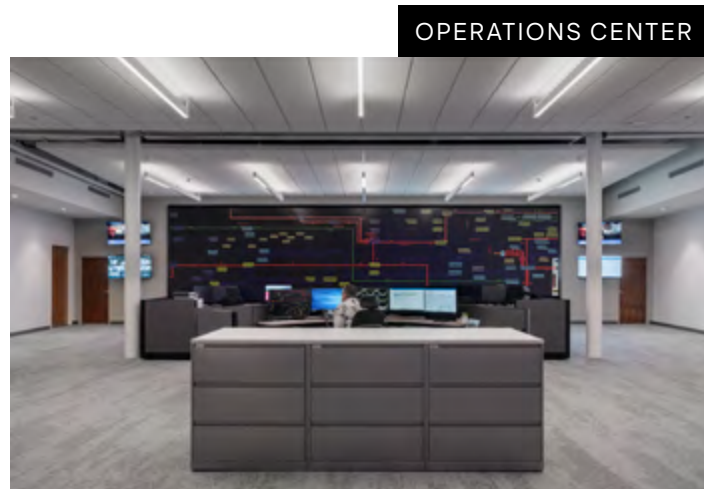
EMPLOYEE ENTRANCE & LOBBY



CONFERENCE CENTER & REFORESTATION AREA



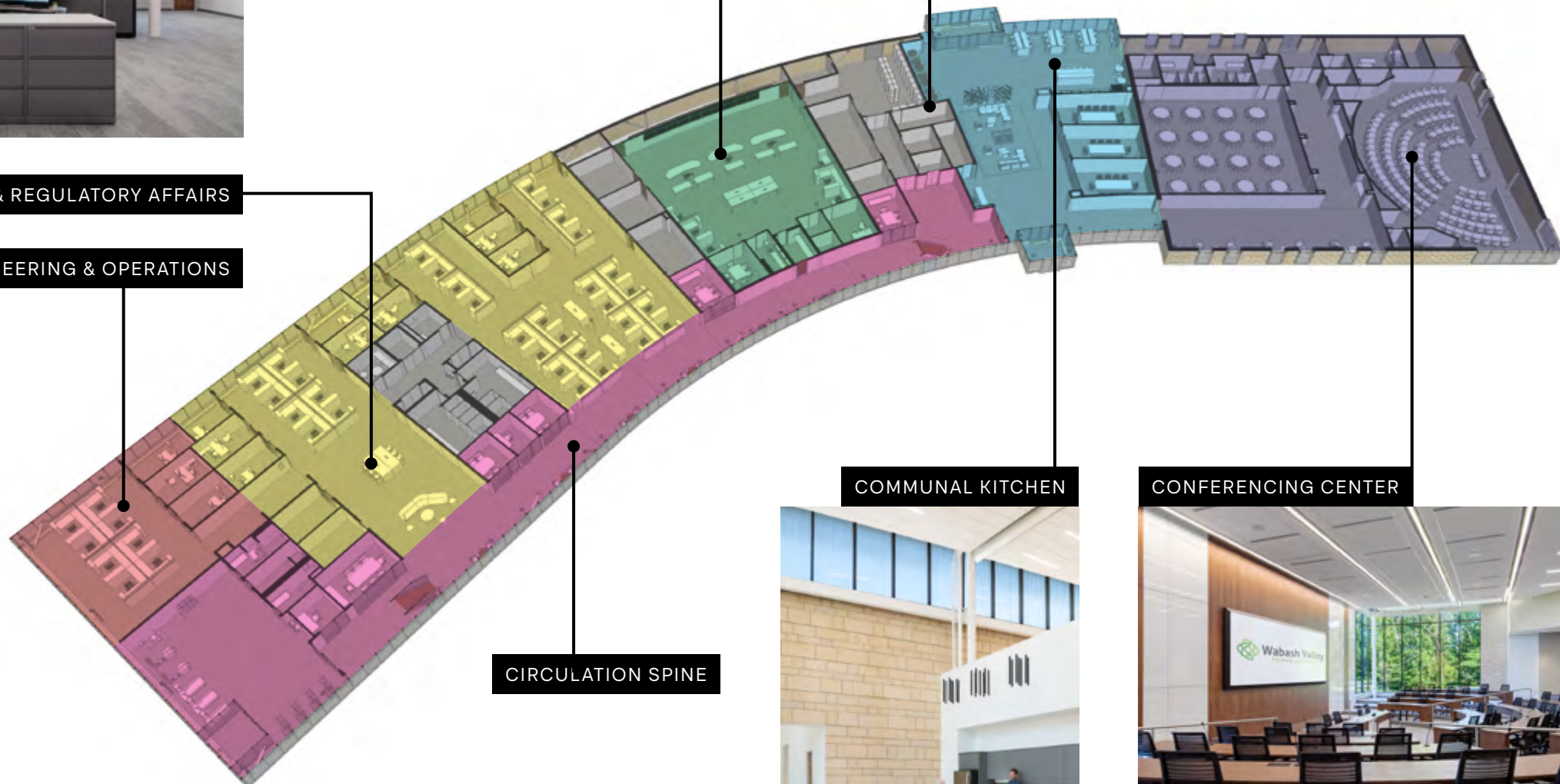
FIRST FLOOR LAYOUT



MONUMENTAL STAIR

TRANSMISSION & REGULATORY AFFAIRS

ENGINEERING & OPERATIONS

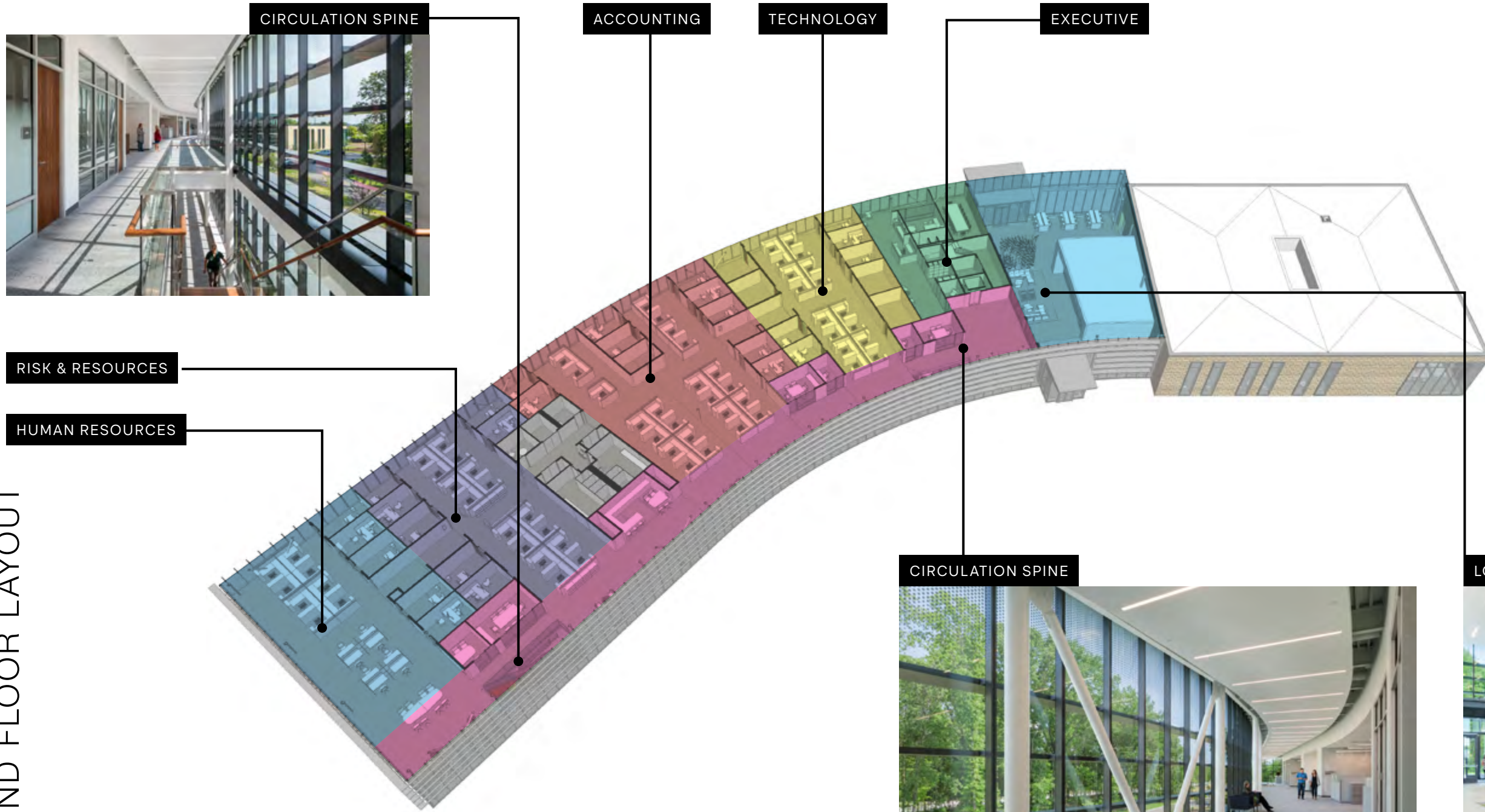


COMMUNAL KITCHEN

CONFERENCING CENTER



SECOND FLOOR LAYOUT



FITNESS CENTER & MONUMENTAL STAIR



VISITOR ENTRY





SUSTAINABILITY / WELLNESS

MASTER PLAN CONNECTIVITY Walking paths and bike lanes connect the site into the Intech Park Master Plan trails and offer the employees a quick escape into nature.

SITE PLACEMENT

By locating the footprint a generous distance from the street and honoring the roundabout with the overall form of the building, a good portion of the preexisting wooded lot is left unharmed.

REFORESTATION

The land just east of the building that was disturbed by construction is designated as a reforestation area which over time will repopulate the site closer to its original wooded lot and offer filtered daylight into the circulation spine along the east facade.

DAYLIGHTING / VIEWS

Both the first and second level are internally organized to offer unimpeded view back to the wooded lot and bring an abundance of natural light deep into the floor plate.

EXTERIOR SUNSHADES

In addition to the trees on site, the building is supplemented with both vertical and horizontal exterior sunshades to discourage direct sunlight to penetrate the building facade.

MONUMENTAL STAIRS

Employees are encouraged to use the two monumental stairs that connect the two levels of the building along the circulation spine on the east facade in lieu of the elevators.

FITNESS CENTER

An in-house, state of the art fitness center is located on the southeast corner of the building allowing direct access and views to the outside.



SOUTHWEST FACADE



SOUTH ENTRY

