

PAPILLON

Category: New Building - Construction cost less than \$5 million

Project Type: Private Residence

Project Address: 145 W 82nd Street, Indianapolis, IN 46260

Substantial Completion: April 2019

Architect's Statement

The challenge presented to the Architects:

“Create a family home that represents both of our personal and professional philosophies, resulting in a nurturing environment for our growing family”. This forward-thinking Indianapolis couple sought a simple, thoughtful solution that would balance their minimalist styling with the warmth of a sustainable and natural material palette. While contemporary in styling, the outcome generates a design which, in its massing and scale, directly relates to the context of its more traditional suburban neighbors and rests comfortably amongst the adjacent one and two-story single-family dwellings.

The design parti employs a simple “L” shaped building. The “L”, as a result of its geometry, creates a gathering point within its folds as an intimate, private, exterior living space protected by the building form. Cradled between the Master wing and main living space, a natural flow of interior-exterior connections is realized. Cantilevered roof elements establish defined exterior rooms, providing a comfortable sense of human scale. The pool, purposely stepped down from the main living floor level becomes a central social spot for recreation and relaxation, satisfying both private and public activities.

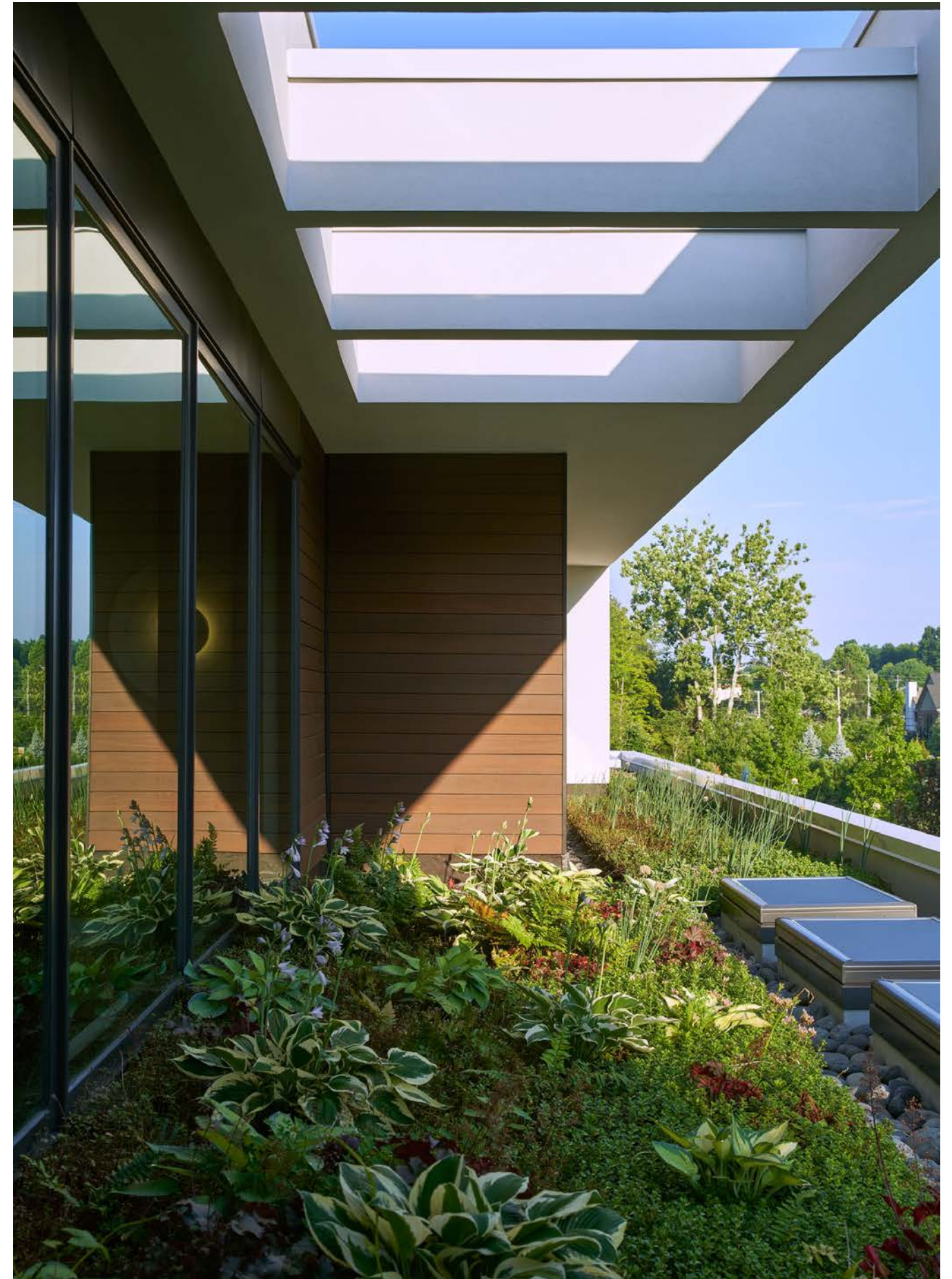
The public faces of the “L” offer more protected street-facing façades, with inviting, but controlled use of glazing, delineating views both in and out of the home. A one-story volume is extruded, and then elongated across the front façade as a horizontal gesture, respecting the neighboring front porches. The use of a wood rainscreen, enriches and warms the façade, reinforcing the horizontality of the composition. The stucco provides the clean and crisp background for the taut elevations and is also a unifying element as the material borders and frames the overall form and roof lines. Masonry elements anchor the home and visually slide from exterior to interior establishing a continuity of materials and a clear integration of form and function.

Large expanses of premium insulated glazing units, multi-slide doors, and associated overhangs choreograph how natural light enters the interior living spaces. A two-story main living space visually connects the two levels, offering bright and welcoming spaces. A richly hued walnut ceiling hovers over the kitchen and dining areas as a counterbalance to the two-story volume, offering more intimate settings. The open stacked stair connects all levels in a straight-forward manner serving as the separating element between the public and private areas of the home.

The signature design gesture utilizes bamboo, which the owners transplanted from their previous home. The Architects chose to locate the bamboo in a lower level concrete planter, which then allows the bamboo to rise-up in front of the glass entry wall through a slot in the main level floor. This exposes the bamboo leaves, in lieu of the stalks, which warmly greet visitors upon entry. The bamboo leaves serve as the natural privacy screen from the street, while the slot provides natural light to the yoga-meditation space below.

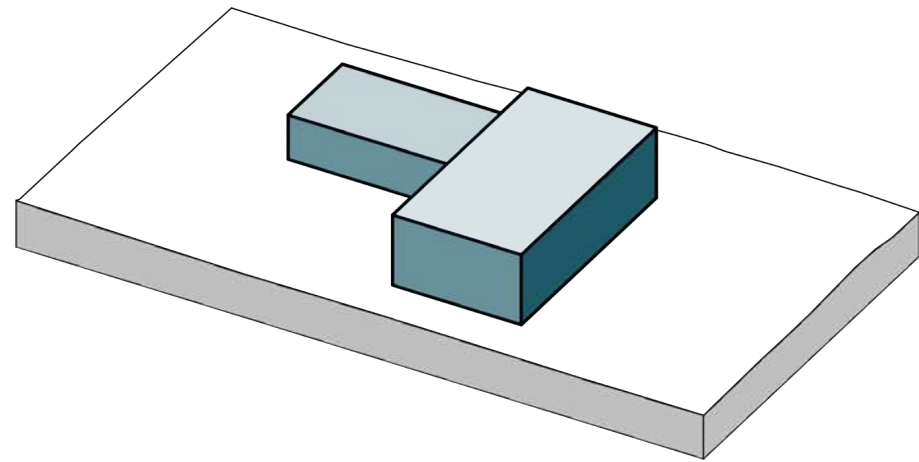
Sustainable and Environmental Design Statement

As founders of an organic body products company which incorporates 100% pure and natural ingredients, the inclusion of sustainable materials was of paramount importance to the owners in the design. Features include a geothermal loop heat pump, improved insulation, premium performance glazing systems, FSC certified flooring and ECOS paint. The use of a vegetated roof system on the first-floor roof areas, not only provide rainwater retention and reduction in heat island effect, but also serve as a butterfly “Papillon” habitat. Like the Papillon, this home spreads its wings to create a serene retreat for family and friends.



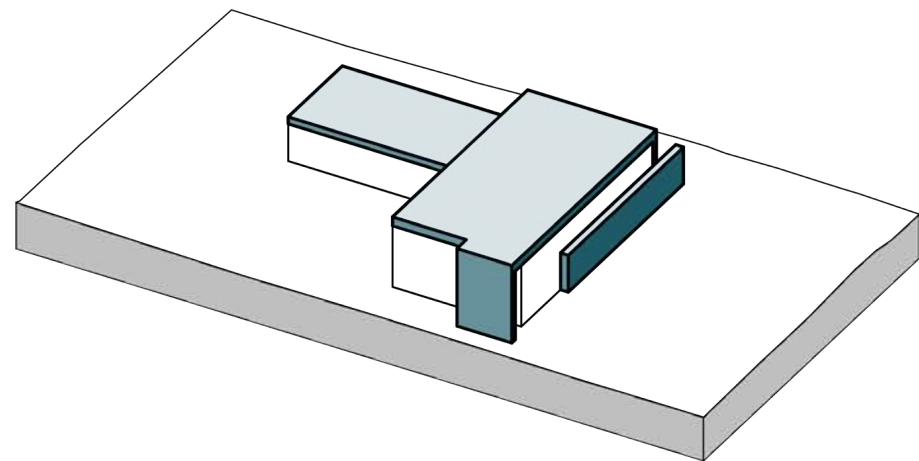






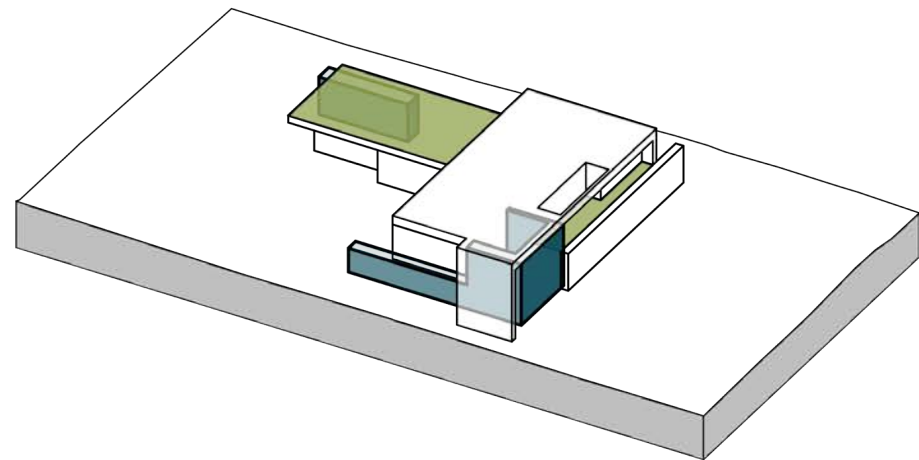
1// FORM

Simple, "L" shaped massing in relation to the proportion, setback and site placement of adjacent neighbors and consistent with the required program size for the home.



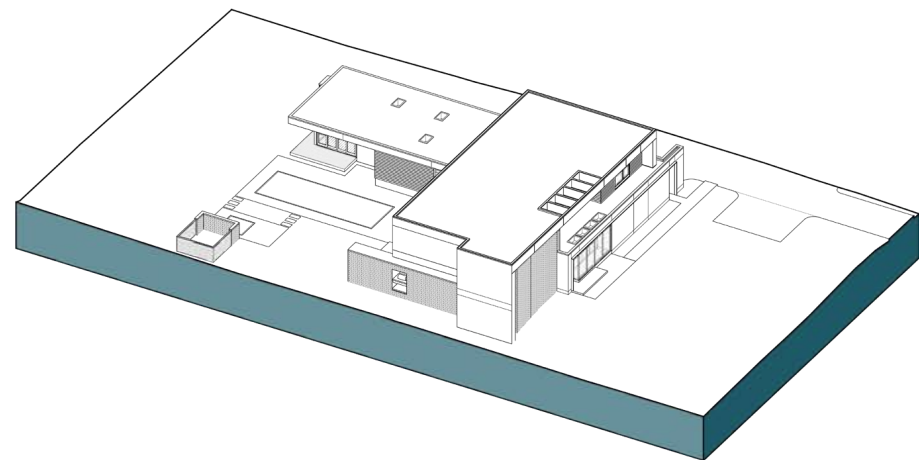
2// SCALE

Break down the scale of the street facing façade by extruding a one-story volume and then to elongate the façade expressing a horizontal proportion. Accentuate the building form by creating a frame at the roof and building edges.



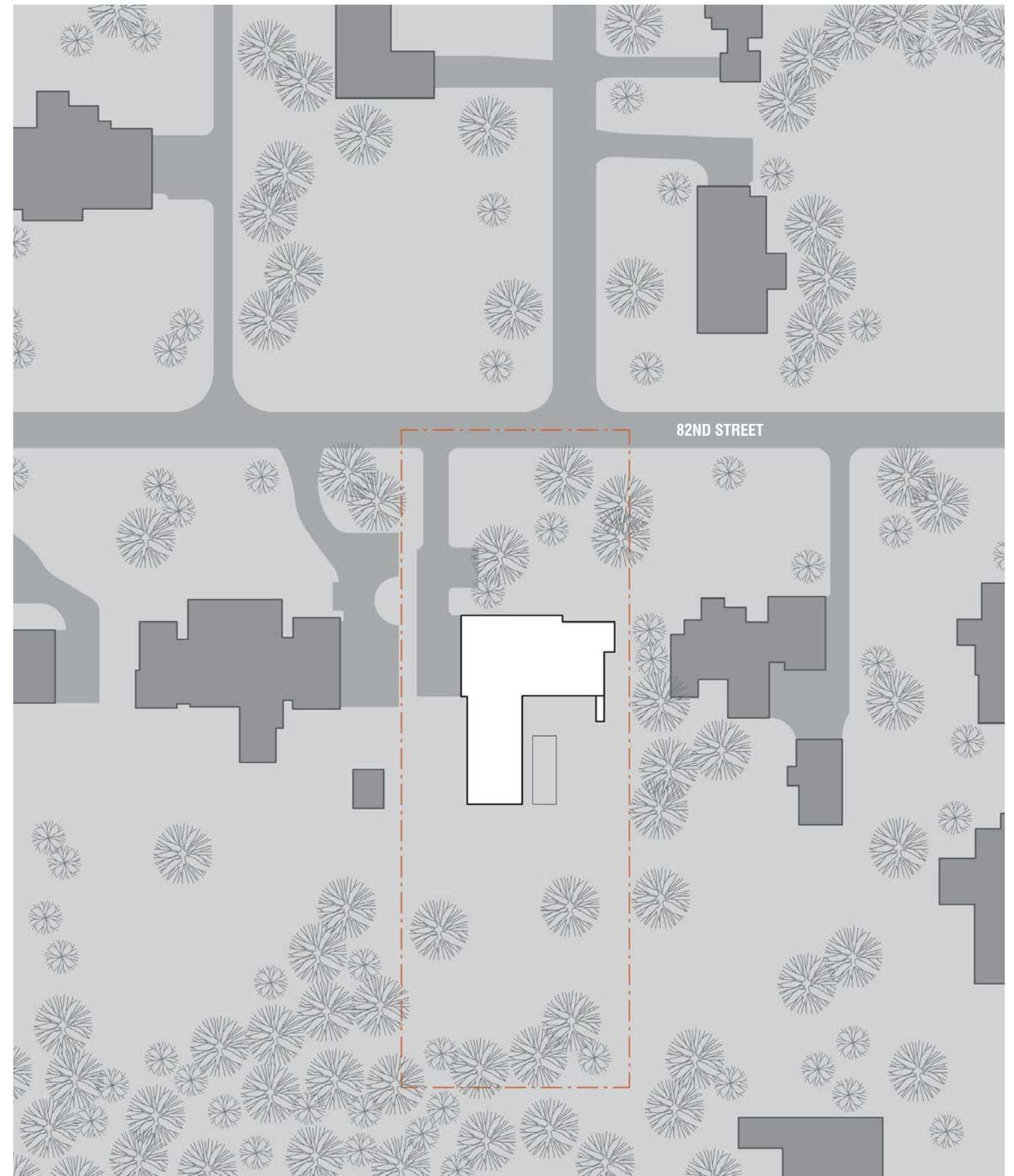
3// ANCHOR + GROUND

Anchor with masonry forms that slide from exterior to interior establishing continuity of materials and integration of form and function. Plant a vegetated roof system on the first floor roof areas to slow and reduce runoff and provide butterfly "Papillon" habitat.



4// ARTICULATE

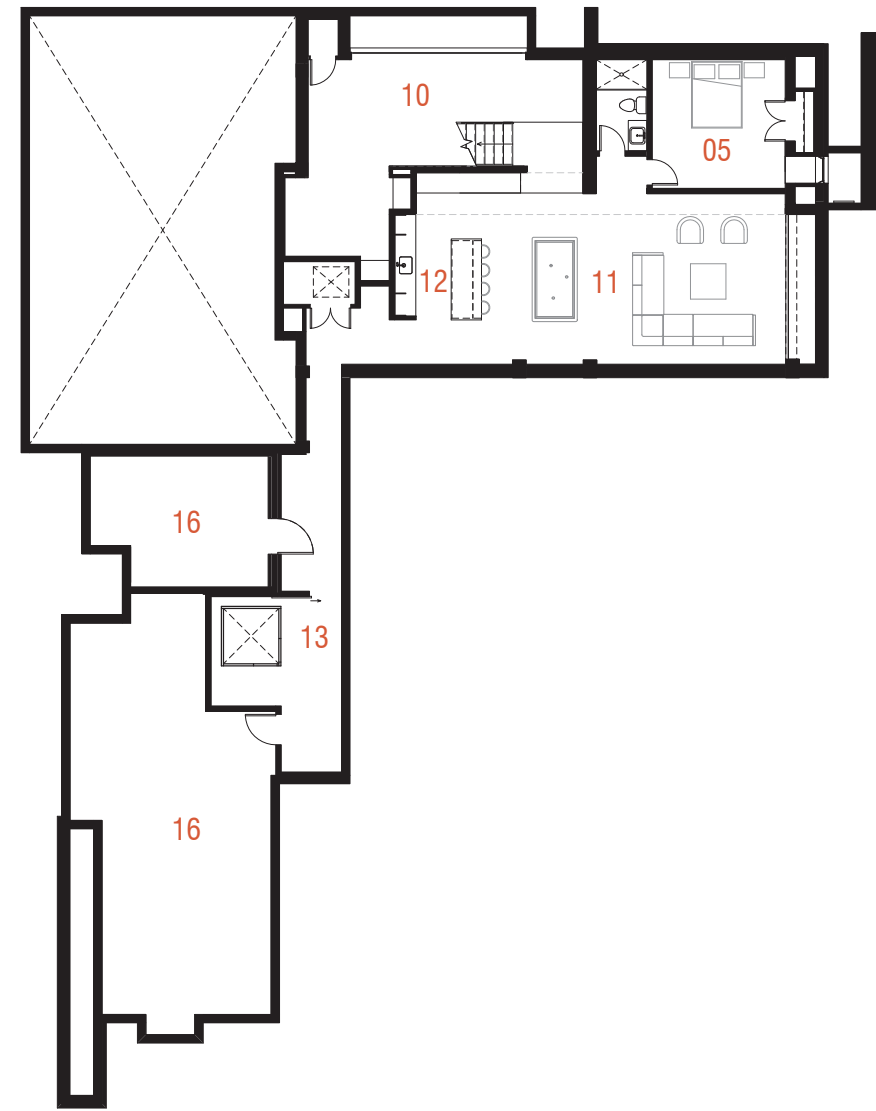
Develop exterior glazing and material opportunities. Express the relationship to the surrounding neighborhood context while complementing a modern styling for the home. Employ a restrained and timeless material palette.



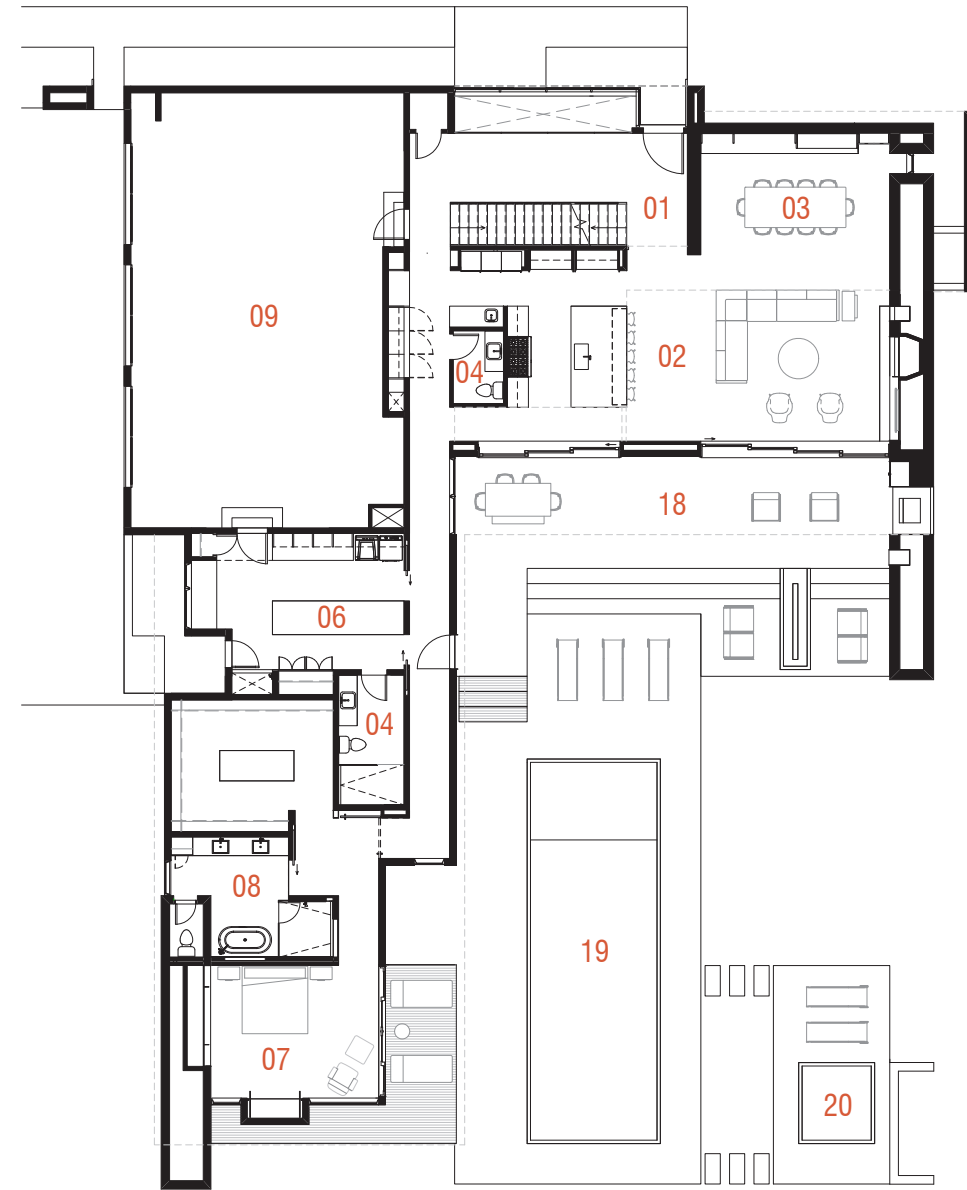
AREA PLAN 

SCALE 

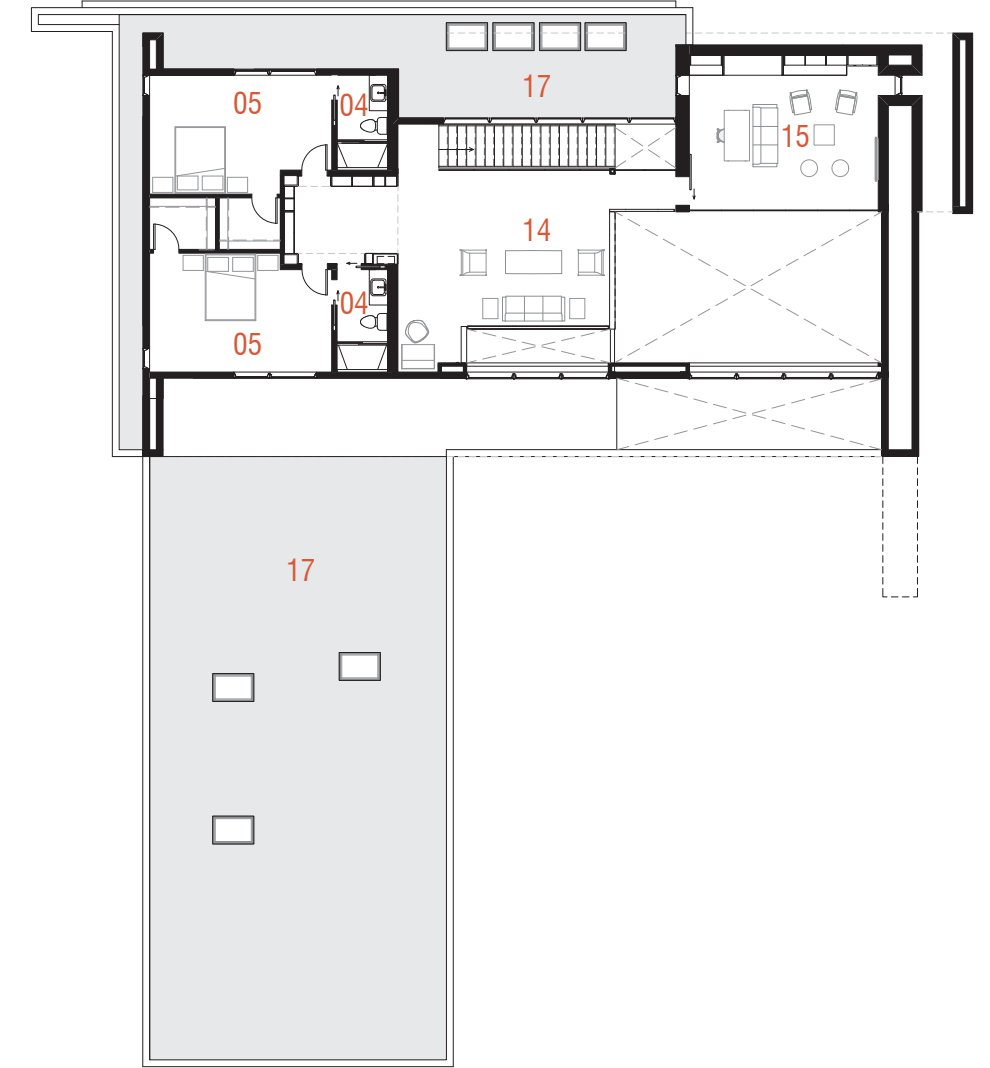
LOWER



FIRST



SECOND

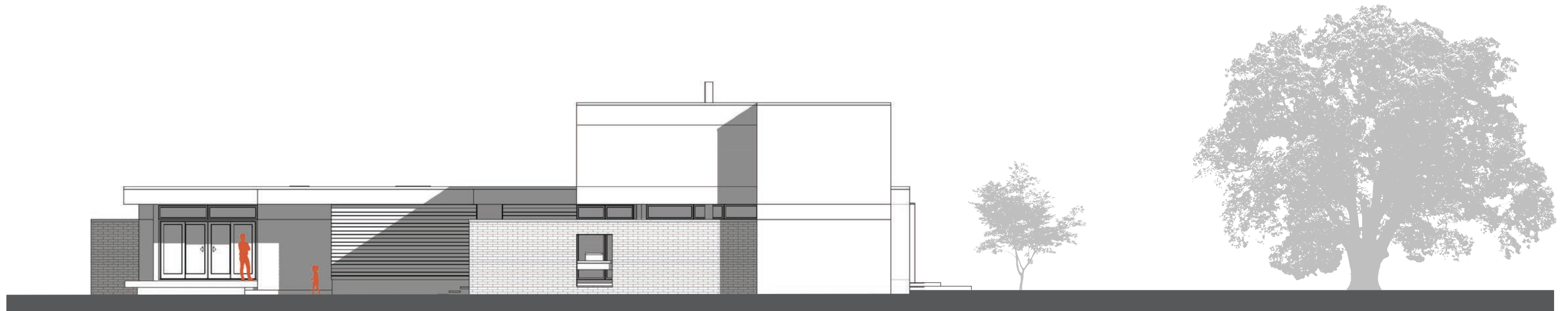


- 01 entry
- 02 living/ kitchen
- 03 dining
- 04 bathroom
- 05 bedroom
- 06 mud/laundry
- 07 master bedroom
- 08 master bathroom
- 09 garage
- 10 yoga studio
- 11 entertainment lounge
- 12 bar
- 13 sauna room
- 14 play loft
- 15 office/ lounge
- 16 mechanical/ storage
- 17 vegetated roof
- 18 outdoor living
- 19 pool
- 20 spa

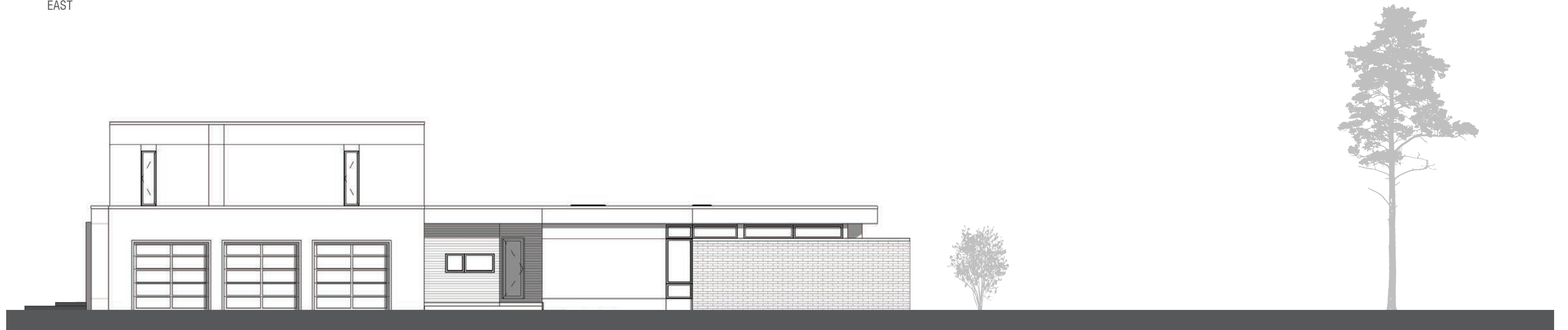


NORTH

SOUTH



EAST



WEST

















