

INDIANAPOLIS PUBLIC LIBRARY
MARTINDALE - BRIGHTWOOD BRANCH



CATEGORY

New Construction -
Project Cost
Greater than \$5 Million

PROJECT TYPE

Civic / Public Library

COMPLETION

May 2020

ADDRESS

2434 N Sherman Dr.
Indianapolis, IN 46218

DESIGN STATEMENT

The new Martindale-Brightwood Library, is more than just a building. Even before the first sketch was produced or any concepts discussed, the Library and design team organized a discovery process to understand the hopes, wants and needs of the community. These efforts revealed a desire for the Library to reflect African American culture, the rich history of the area and the undeniable spirit of the people who call it home.

The Martindale-Brightwood Library is an iconic structure reflective of the people the Library serves. It is a place where innovation and discovery reside and serves as a catalyst for growth, rejuvenation, and positive change.





The Library is situated in the heart of the economically depressed historic Northeast neighborhood. This once segregated community had to overcome the physical division of the “Bee Line” railroad. In recent decades, Martindale-Brightwood residents have rallied together, established a new vision for the neighborhood and paved the way for dramatic change.





NEIGHBORHOOD HUB

The ultimate goal was for the Library to become a neighborhood hub; a safe and welcoming place for community gatherings, seniors to socialize, and for children and teens to spend time in a supportive and nurturing environment.

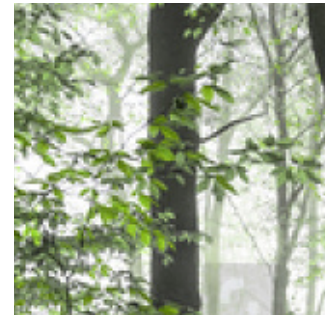
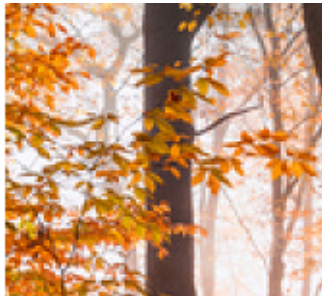
Large windows flood the interior with natural light and provide a connection between the community outside and the Library staff and patrons inside. Along Sherman Drive, these portals are an opportunity to sit, reflect and observe the evolution of the neighborhood. They also offer passers-by an inspiring glimpse into the collections housed within the Library.



SUSTAINABLE DESIGN

The Martindale-Brightwood Library sits on a brown-field redevelopment in an economically depressed area. Special consideration was taken to ensure abundant natural light through the use of large windows.





AUTUMN



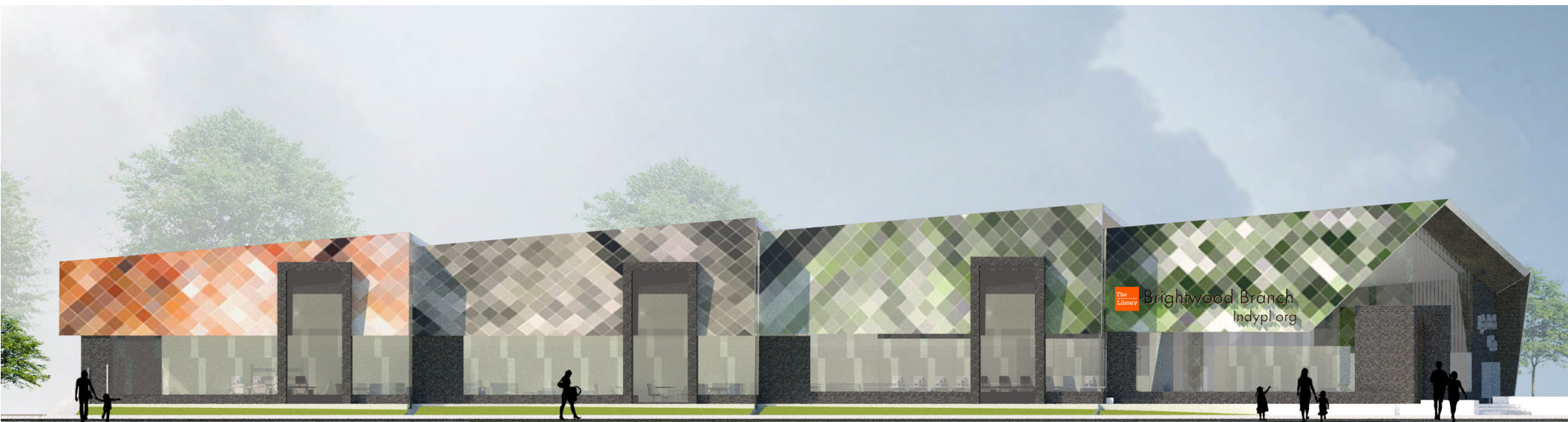
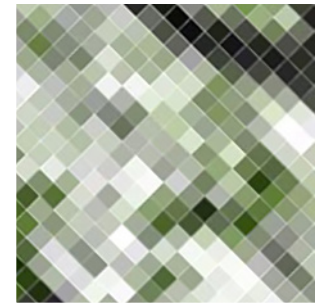
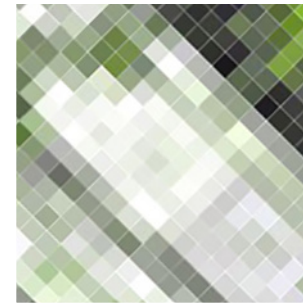
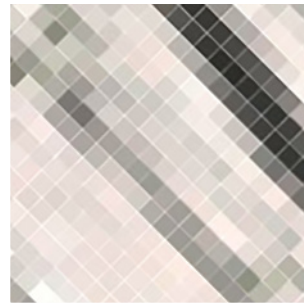
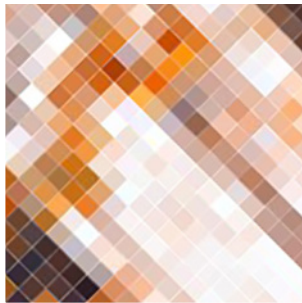
WINTER



SPRING



SUMMER



SEASONS OF CHANGE



Progressively sized bands along the building mass were used to symbolize the “Seasons of Change” all neighborhoods experience. Internally, each band contains different collections: furniture and spaces for children, teens, adults, and seniors in keeping with the changing seasons in the lives of the community.